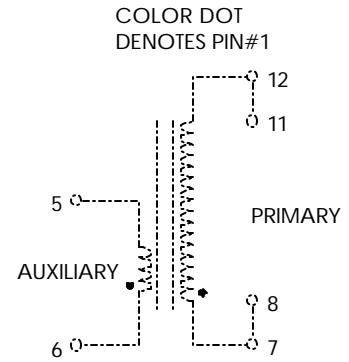


**TABLE 1: ELECTRICAL SPECIFICATIONS AT 25 °C**

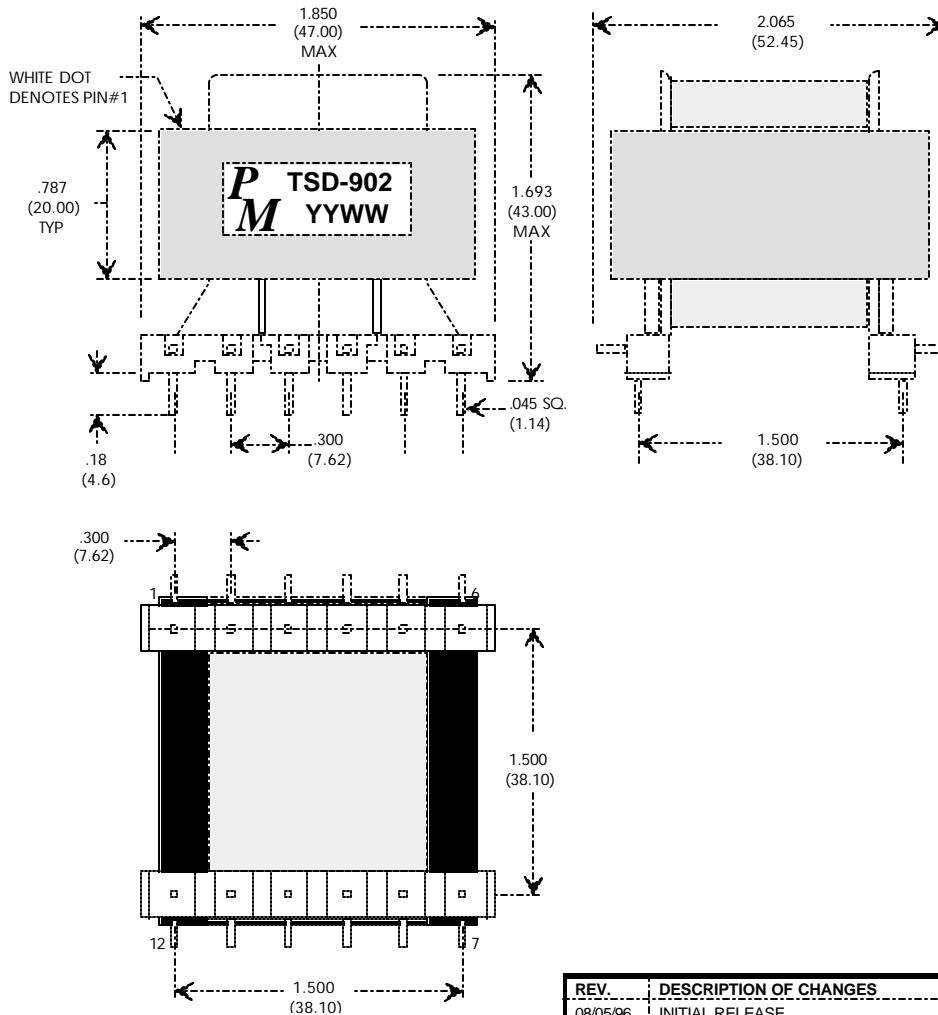
1) PFC BOOST INDUCTOR WITH AUXILIARY WINDING.  
DESIGNED FOR USE WITH MICRO LINEAR'S ZVS ML???? I.C.

PARAMETER	SPEC LIMITS			UNITS
	MIN.	TYP.	MAX.	
OCL INDUCTANCE: (7,8 TO 11,12) VOLTAGE = 0.250Vrms FREQUENCY = 100.0 KHZ	378	420	462	μHy
TURNS RATIO: (AUX : PRI)	—	1:29.50	—	±5%
DC RESISTANCE (7,8 TO 11,12)	—	.086	1.00	Ohms
HI-POT: PRIMARY TO AUX	1000	—	—	Vac

**FIGURE 1: SCHEMATIC DIAGRAM**



**FIGURE 2: PHYSICAL DIMENSIONS IN INCHES. (mm)**



REV.	DESCRIPTION OF CHANGES	BY
08/05/96	INITIAL RELEASE	TO
08/30/96	CUSTOMER CHANGED TURNS	TO
01/09/02	CORRECTED MAX DIMENSION	LL



UNLESS OTHERWISE SPECIFIED  
DIMENSIONS ARE IN MM  
DIMENSIONAL TOLERANCES ARE:  
DECIMALS ANGLES  
.X ± .25 ± 0° 30'  
.XX ± .15  
DO NOT SCALE DRAWING

**PFC BOOST INDUCTOR CONTROL DRAWING**

PREMIER P/N: TSD-902	REVISION: 01/09/02
DRAWN BY: TOM O'NEIL	REF: ML
SCALE: NONE	SHEET: 1 OF 2