



US007352595B2

(12) **United States Patent**
Yang et al.

(10) **Patent No.:** **US 7,352,595 B2**
(45) **Date of Patent:** ***Apr. 1, 2008**

(54) **PRIMARY-SIDE CONTROLLED SWITCHING REGULATOR**

(56) **References Cited**

(75) Inventors: **Ta-yung Yang**, Milpitas, CA (US);
Chuh-Ching Li, Jhongli (TW); **Feng Cheng Tsao**, Linbian Township,
Pingtung County (TW)

U.S. PATENT DOCUMENTS

6,721,192 B1 4/2004 Yang et al. 363/21.18
6,836,415 B1 12/2004 Yang et al. 363/21.01
6,862,194 B2 3/2005 Yang et al. 363/16
7,161,816 B2* 1/2007 Shteynberg et al. 363/21.13

(73) Assignee: **System General Corp.**, Taipei Hsien (TW)

* cited by examiner

Primary Examiner—Rajnikant B. Patel

(*) Notice: Subject to any disclaimer, the term of this patent is extended or adjusted under 35 U.S.C. 154(b) by 139 days.

(74) *Attorney, Agent, or Firm*—J.C. Patents

This patent is subject to a terminal disclaimer.

(57) **ABSTRACT**

A switching regulator includes a switching device to switch a transformer from a primary-side to secondary side. A control circuit generates a switching signal for regulating output of the switching regulator. The control circuit includes a first circuit to generate a first signal and a timing signal by measuring a reflected signal of the transformer. A second circuit produces a second signal by integrating a current signal with the timing signal. The current signal represents a primary-side switching current of the transformer. A first feedback circuit produces a first feedback signal in response to the first signal and the reference signal, in which the reference signal is varied in response to the change of the second signal. Furthermore, a second feedback circuit generates a second feedback signal in response to the second signal. A switching control circuit generates the switching signal in response to the feedback signals.

(21) Appl. No.: **11/270,867**

(22) Filed: **Nov. 8, 2005**

(65) **Prior Publication Data**

US 2007/0103134 A1 May 10, 2007

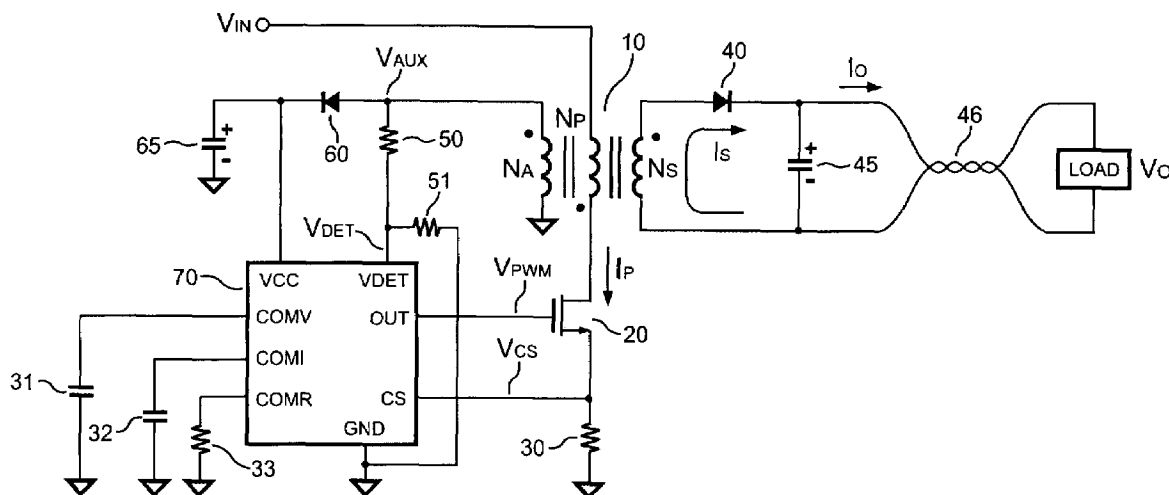
(51) **Int. Cl.**
H02M 3/335 (2006.01)

(52) **U.S. Cl.** **363/21.13; 363/21.15**

(58) **Field of Classification Search** 363/21.2,
363/21.13, 16-19, 95, 89, 97, 37; 323/222,
323/207, 288, 299, 287, 300

See application file for complete search history.

27 Claims, 10 Drawing Sheets



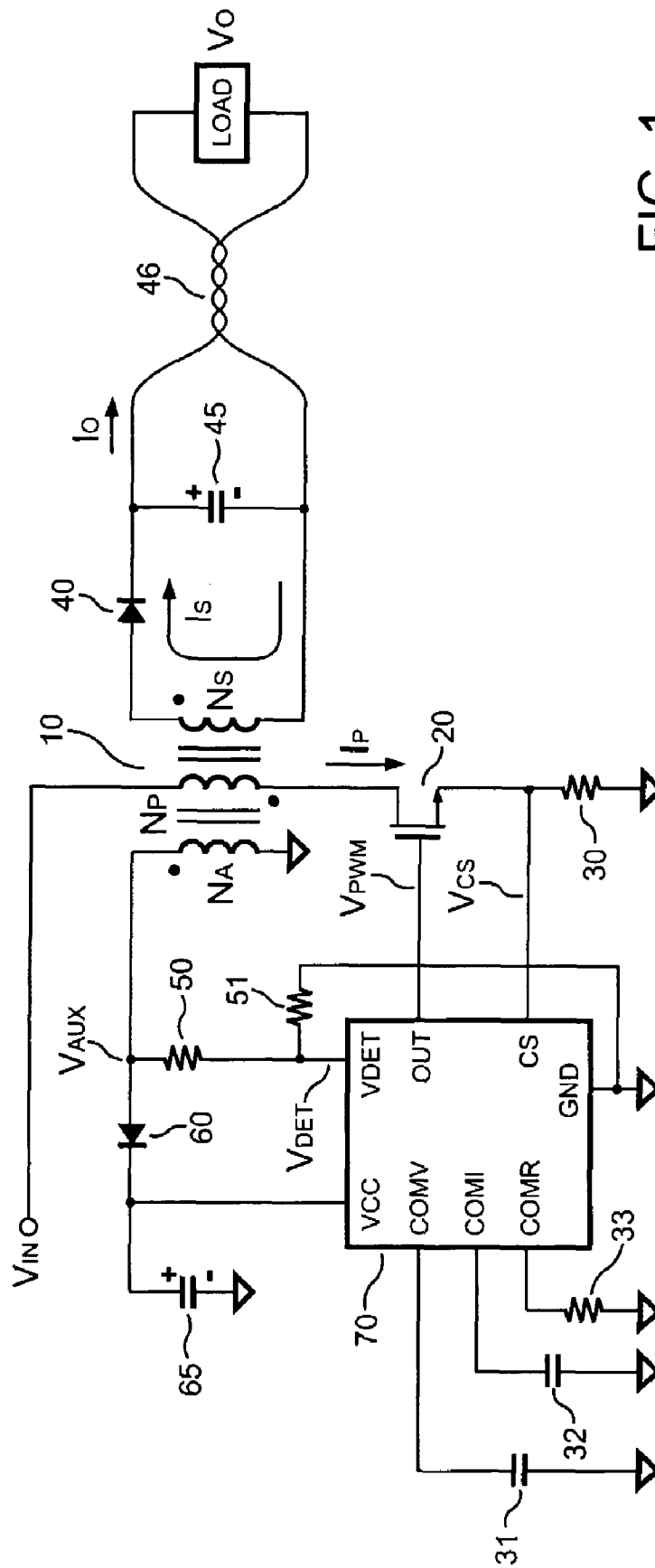


FIG. 1

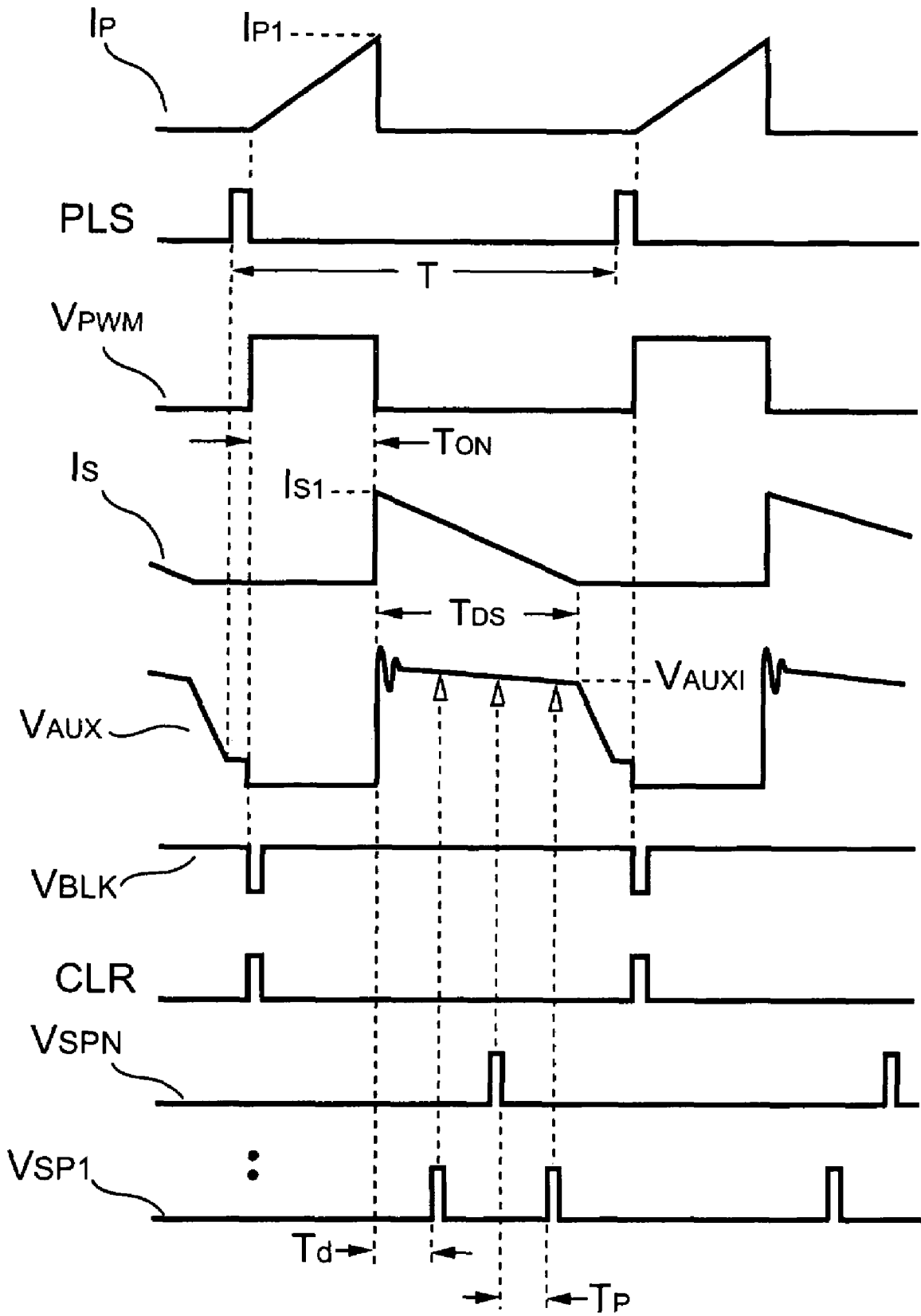


FIG. 2

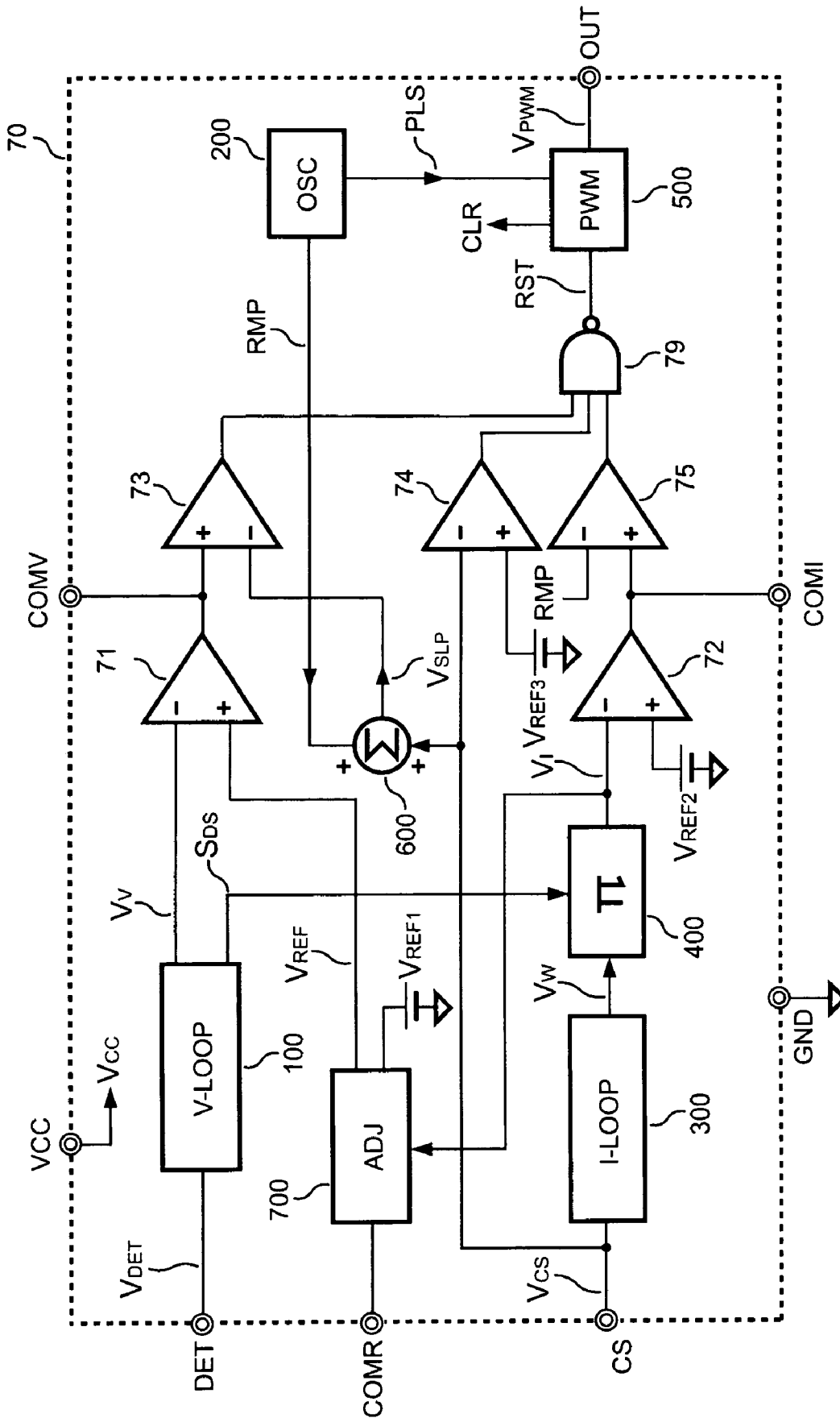


FIG. 3

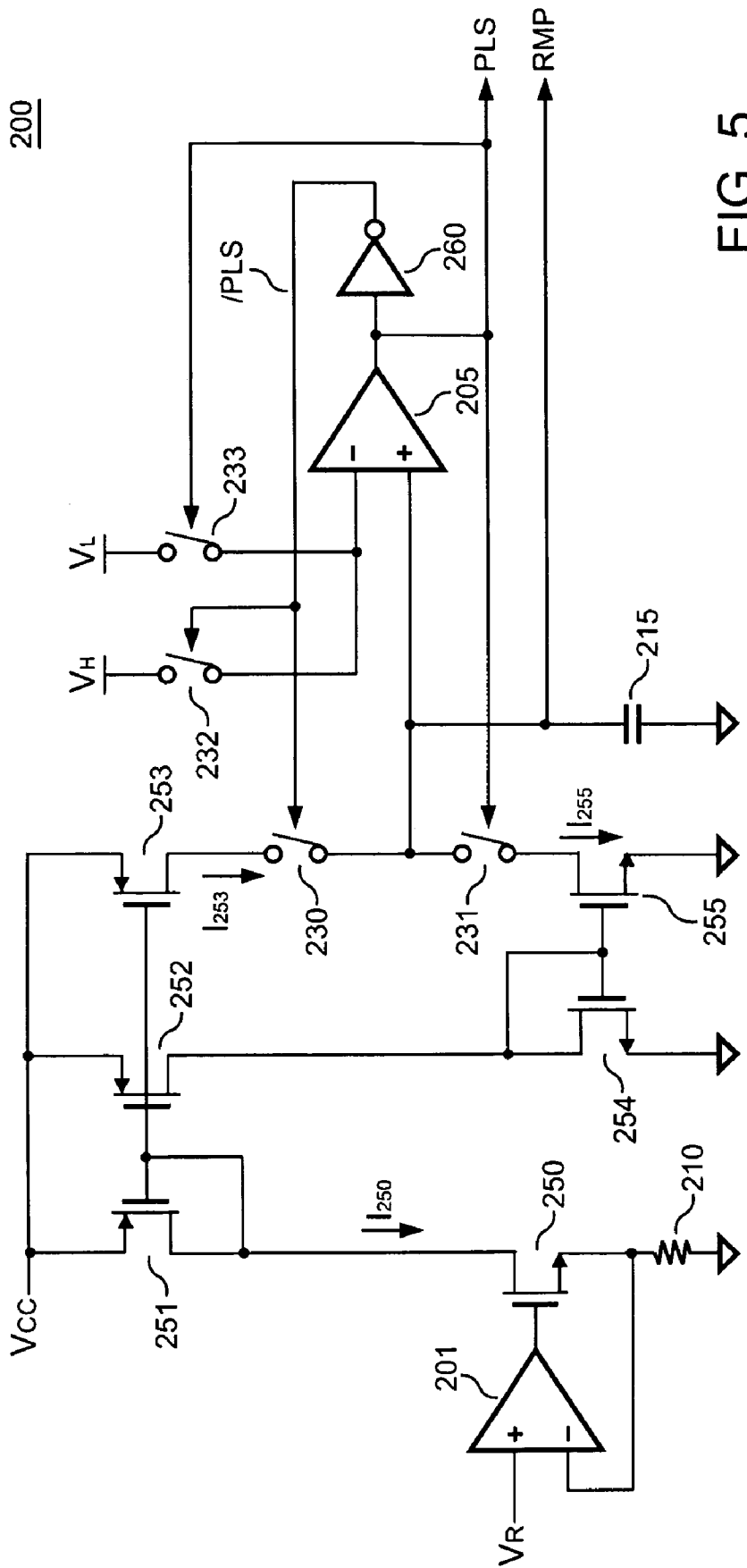


FIG. 5

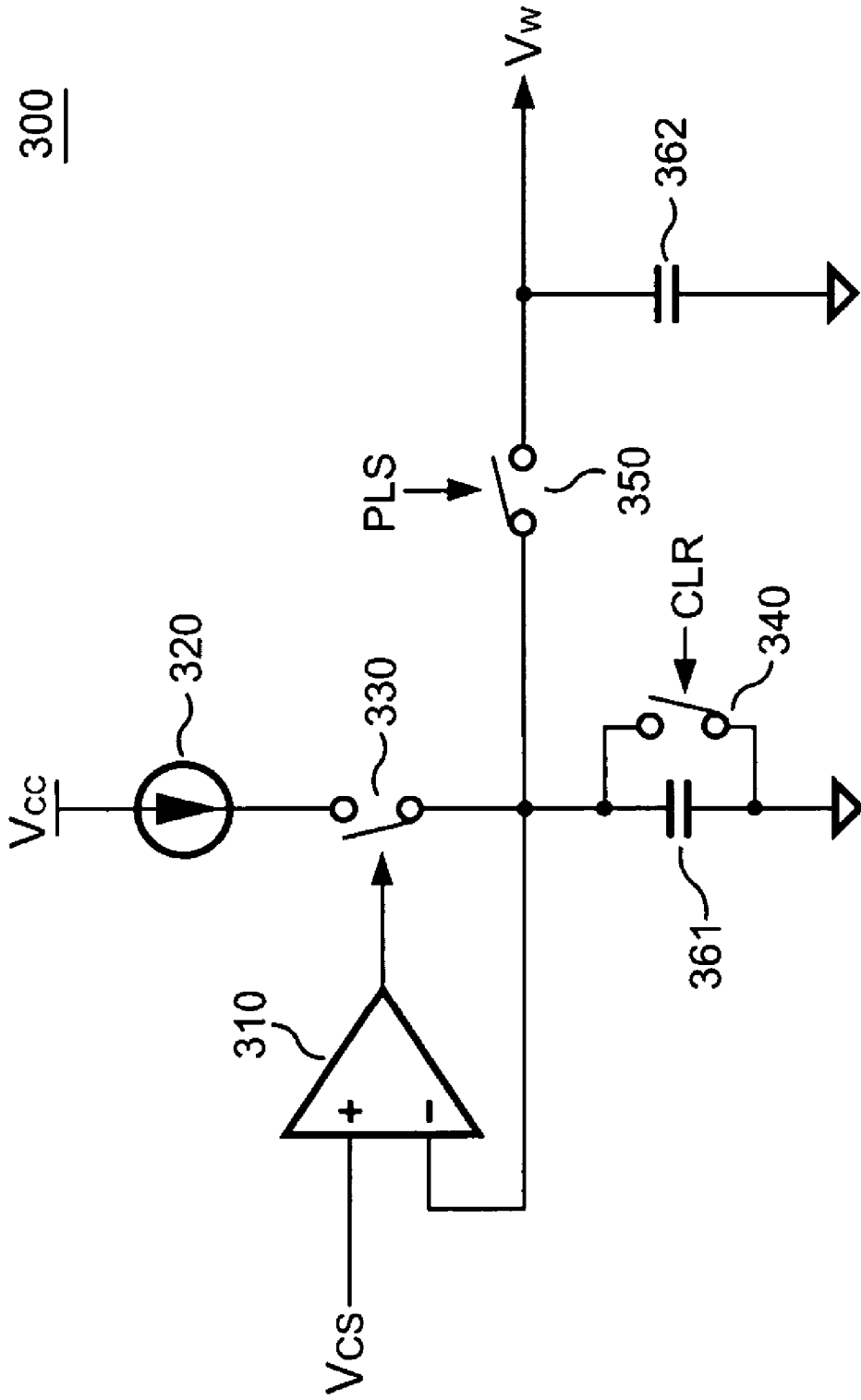


FIG. 6

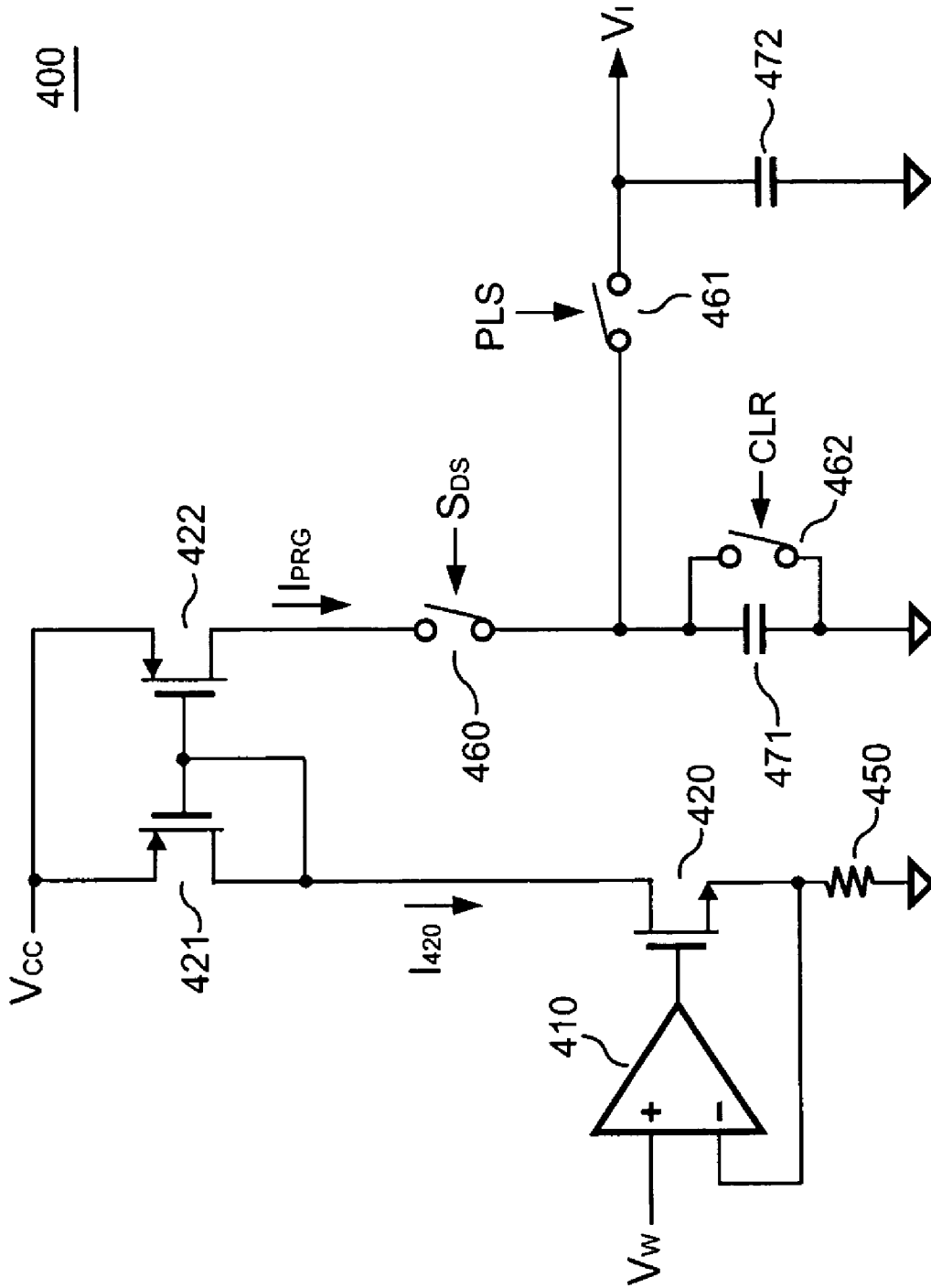


FIG. 7

500

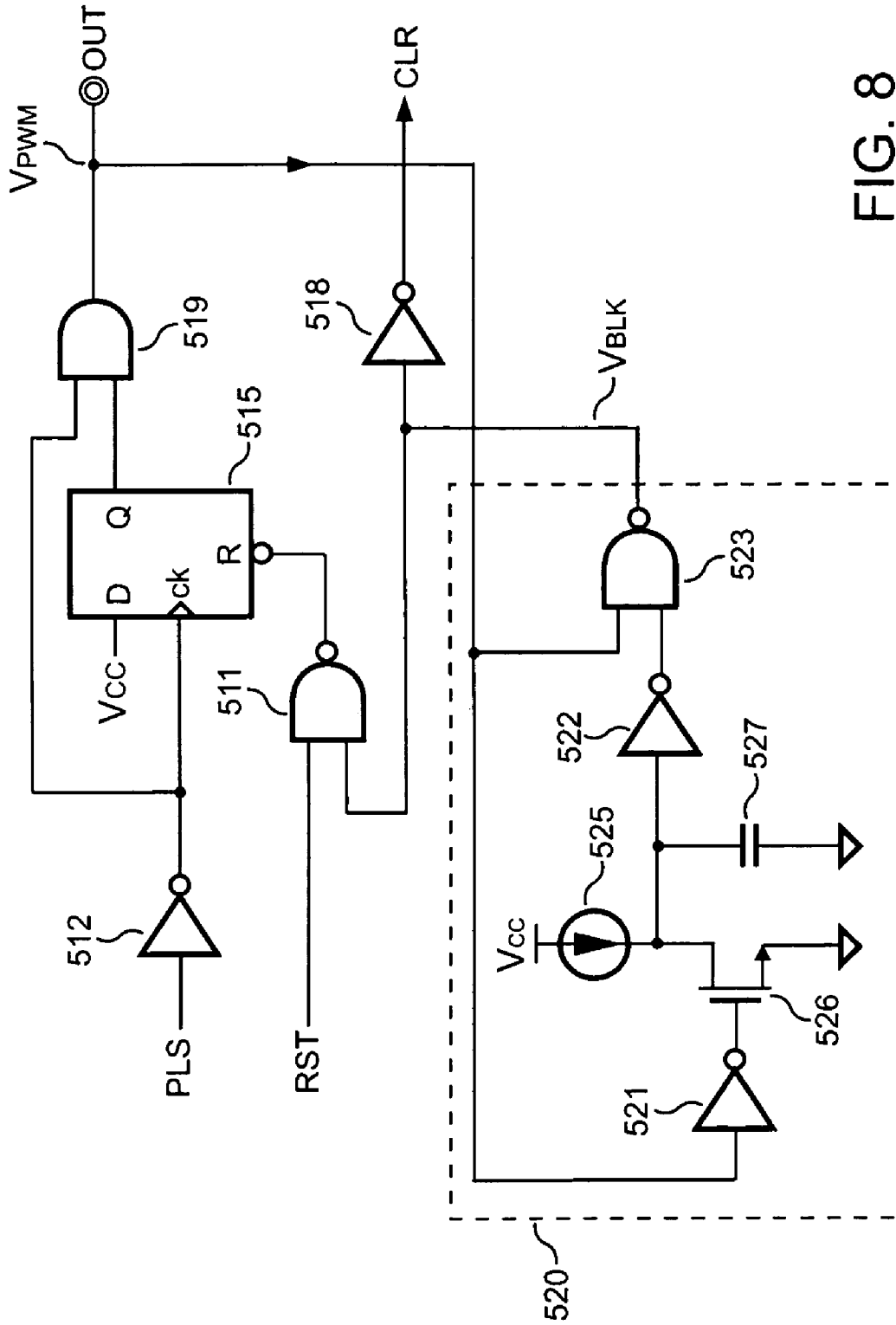


FIG. 8

600

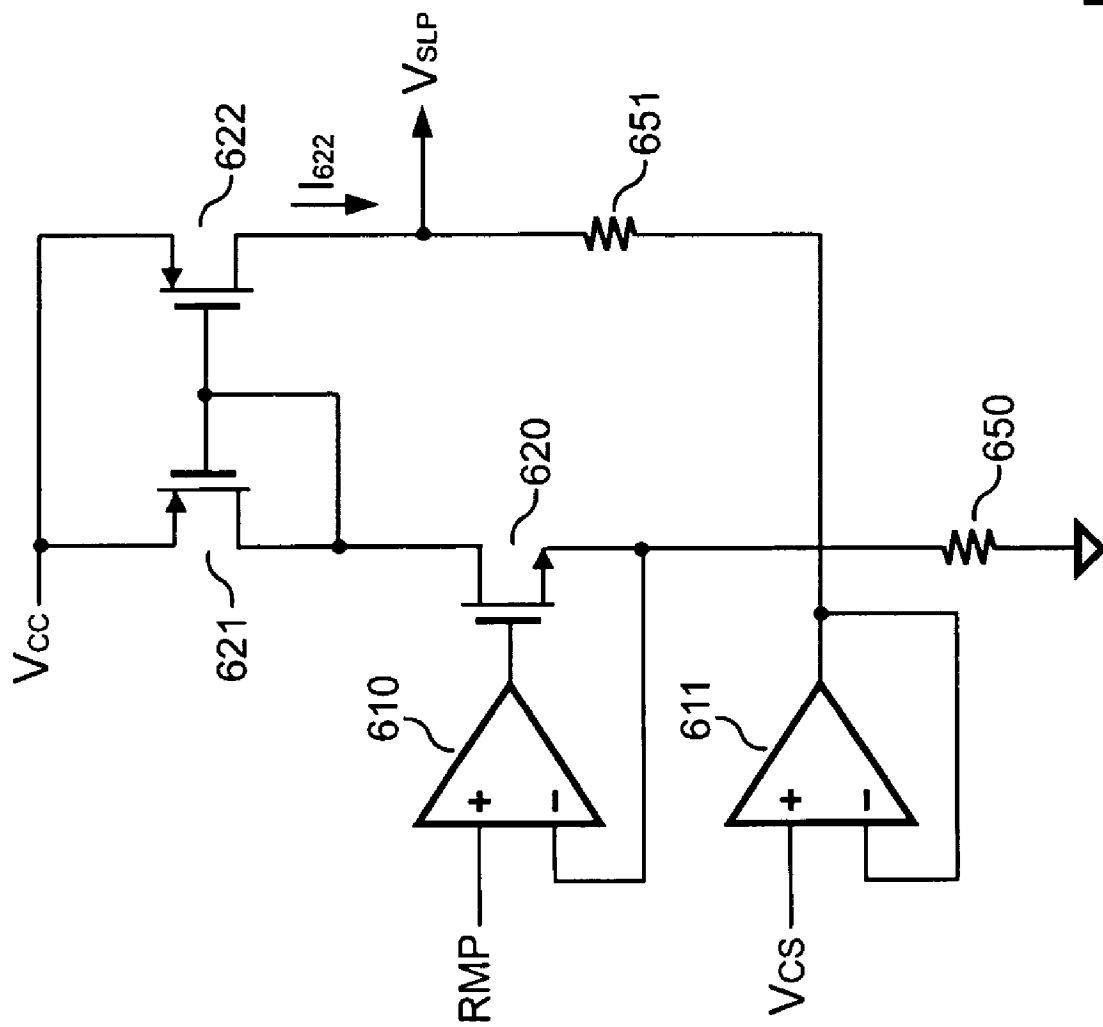


FIG. 9

700

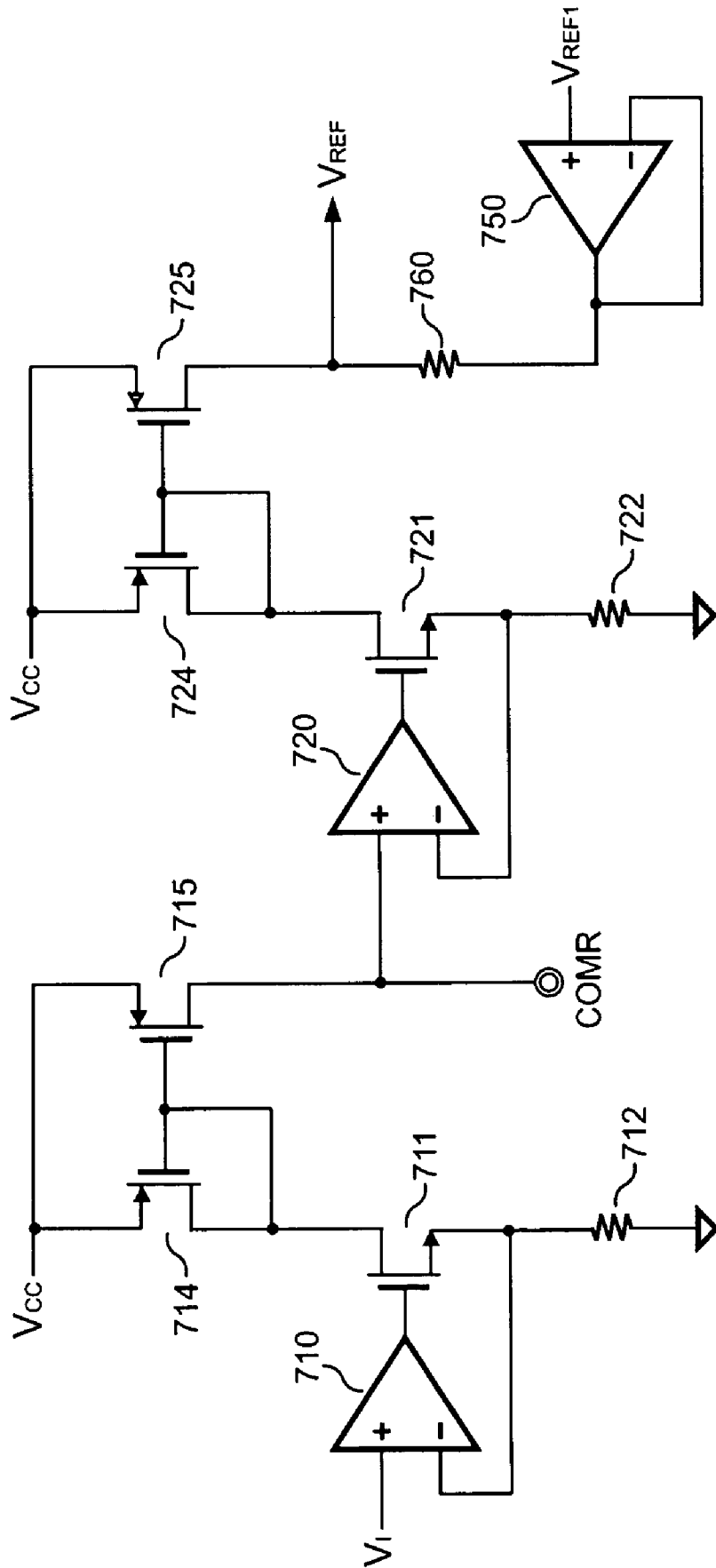


FIG. 10

1

PRIMARY-SIDE CONTROLLED SWITCHING REGULATOR

BACKGROUND OF THE INVENTION

1. Field of the Invention

The present invention relates to a switching regulator, and more specifically it relates to an isolated switching regulator.

2. Description of Related Art

Various switching regulators have been widely used for providing regulated voltage and current. For safety reasons, off-line switching regulators must provide isolation between their primary side and secondary side. Therefore, a control circuit is equipped at the primary side of a switching regulator, an optical-coupler, and the secondary-side circuit are needed to regulate an output voltage and an output current of the switching regulator. To reduce the size and cost of the switching regulator, the need of optical-coupler and secondary-side circuit to be eliminated is the trend.

In recent developments, many primary side control schemes have been disclosed such as U.S. Pat. No. 6,721,192 entitled "PWM controller regulating output voltage and output current in primary side" Yang et al., U.S. Pat. No. 6,836,415 entitled "Primary-side regulated pulse width modulation controller with improved load regulation" Yang, et al; and U.S. Pat. No. 6,862,194 entitled "Flyback power converter having a constant voltage and a constant current output under primary-side PWM control" Yang, et al. However, the drawback of the aforementioned conventional primary side control schemes is the inaccurate control of the output voltage and output current.

The object of the present invention is to provide a switching regulator that is able to accurately control the output voltage and the output current at the primary side of the switching regulator. Therefore, the size and cost of the switching regulator is reduced.

SUMMARY OF THE INVENTION

A primary-side controlled switching regulator (switching regulator) includes a switching device to switch a transformer for transferring the energy from a primary-side to a secondary side of the switching regulator. A control circuit is coupled to the transformer for generating a switching signal to switch the switching device and to regulate the output of the switching regulator. A first circuit coupled to the transformer is included in the control circuit for generating a first signal and a timing signal by measuring a reflected signal of the transformer. A discharge time of the transformer is represented by the timing signal. A second signal is produced by a second circuit and a third circuit by integrating a current signal with the timing signal, in which the current signal represents a primary-side switching current of the transformer. In addition, a time constant of the third circuit is correlated with a switching period of the switching signal. A first error amplifier having a first reference signal is utilized to generate a first feedback signal in response to the first signal. To improve the load regulation, the first reference signal is increased in response to the increase of the second signal. A second feedback signal is generated by a second error amplifier having a second reference signal in response to the second signal. Accordingly, the switching signal is generated by a switching control circuit in response to the first feedback signal and the second feedback signal. The switching signal has a minimum on-time when the switching signal is enabled, which

2

further ensures a minimum value of the discharge time for the multi-sampling of the reflected signal.

It is to be understood that both the foregoing general descriptions and the following detailed descriptions are exemplary, and are intended to provide further explanation of the invention as claimed. Still further objects and advantages will become apparent from a consideration of the ensuing description and drawings.

BRIEF DESCRIPTION OF THE DRAWINGS

The accompanying drawings are included to provide further understanding of the invention, and are incorporated into and constitute a part of this specification. The drawings illustrate embodiments of the invention and, together with the description, serve to explain the principles of the invention.

FIG. 1 illustrates a conventional circuit diagram of a primary-side controlled switching regulator.

FIG. 2 illustrates a plurality of key waveforms of a conventional switching regulator.

FIG. 3 illustrates a control circuit according to an embodiment of the present invention.

FIG. 4 illustrates a first circuit according to an embodiment of the present invention.

FIG. 5 illustrates an oscillator according to an embodiment of the present invention.

FIG. 6 illustrates a second circuit according to an embodiment of the present invention.

FIG. 7 illustrates a third circuit according to an embodiment of the present invention.

FIG. 8 illustrates a PWM circuit according to an embodiment of the present invention.

FIG. 9 illustrates a circuit schematic of an adder according to an embodiment of the present invention.

FIG. 10 illustrates an adjust circuit for programming a reference signal according to an embodiment of the present invention.

DESCRIPTION OF THE EMBODIMENTS

FIG. 1 illustrates a conventional primary-side controlled switching regulator. The switching regulator includes a transformer 10 having an auxiliary winding N_A , a primary winding N_p , and a secondary winding N_s . To regulate an output voltage V_O and an output current I_O of the switching regulator, a switching signal V_{PWM} is generated by a control circuit 70 to a transistor 20 for switching a transformer 10.

FIG. 2 illustrates a plurality of signal waveforms of the conventional switching regulator illustrated in FIG. 1. As the switching signal V_{PWM} is a logic-high, a primary-side switching current I_p shall be generated accordingly. A peak value I_{p1} of the primary-side switching current I_p is given by:

$$I_{p1} = \frac{V_{IN}}{L_p} \times T_{ON} \quad (1)$$

where V_{IN} is an input voltage applied to the transformer 10, L_p is the inductance of the primary winding N_p of the transformer 10, and T_{ON} is an on-time of the switching signal V_{PWM} .

Once the switching signal V_{PWM} is dropped to a logic-low, the energy stored in the transformer 10 shall be delivered to the secondary side of the transformer 10 and to an

3

output of the switching regulator via a rectifier **40**. A secondary-side switching current I_S is generated accordingly. A peak value I_{S1} of the secondary-side switching current I_S is expressed by the following:

$$I_{S1} = \frac{(V_O + V_F)}{L_S} \times T_{DS} \quad (2)$$

where V_O is the output voltage of the switching regulator, V_F is a forward voltage drop of the rectifier **40**, and L_S is the inductance of the secondary winding N_S of the transformer **10**, and T_{DS} is a discharge time of the secondary-side switching current I_S .

Meanwhile, a reflected signal V_{AUX} is generated at the auxiliary winding N_A of the transformer **10**. The reflected signal V_{AUX} is given by:

$$V_{AUX} = \frac{T_{NA}}{T_{NS}} \times (V_O + V_F) \quad (3)$$

where T_{NA} and T_{NS} are a plurality of winding turns of the auxiliary winding N_A and the secondary winding N_S of the transformer **10**, respectively.

The reflected signal V_{AUX} is started to decrease as the secondary-side switching current I_S is fallen to zero. This is also indicative that the energy of the transformer **10** is fully released at the moment. Therefore, as shown in FIG. 2, the discharge time T_{DS} in equation (2) is measured from the falling edge of the switching signal V_{PWM} to the point that the reflected signal V_{AUX} is started to fall. The secondary-side switching current I_S is determined by the primary-side switching current I_P and the winding turns of the transformer **10**. The secondary-side switching current I_S is expressed by:

$$I_S = \frac{T_{NP}}{T_{NS}} \times I_P \quad (4)$$

where T_{NP} is a plurality of winding turns of the primary winding N_P of the transformer **10**.

Referring to FIG. 1, the control circuit **70** includes a supply terminal VCC and a ground terminal GND for receiving power. A divider connected between the auxiliary winding N_A of the transformer **10** and a ground reference level is formed by a resistor **50** and a resistor **51**. A detection terminal DET of the control circuit **70** is connected to a joint of the resistor **50** and the resistor **51**. A voltage V_{DET} generated at the detection terminal DET is given by:

$$V_{DET} = \frac{R_{S1}}{R_{S0} + R_{S1}} \times V_{AUX} \quad (5)$$

where R_{S0} and R_{S1} are the resistance of the resistors **50** and **51**.

A capacitor **65** is further charged by the reflected signal V_{AUX} via a rectifier **60** to power the control circuit **70**. A current-sense resistor **30** is served as a current sense device. The current-sense resistor **30** is connected from a source of the transistor **20** to the ground reference level for converting the primary-side switching current I_P into a current-sense

4

signal V_{CS} . A sense terminal CS of the control circuit **70** is connected to the current-sense resistor **30** for detecting the current-sense signal V_{CS} .

The switching signal V_{PWM} is generated by an output terminal OUT of the control circuit **70** to switch the transformer **10**. A voltage-compensation terminal COMV is connected to a first compensation network for frequency compensation for the first error amplifier. The first compensation network can be a capacitor connected to the ground reference level, such as a capacitor **31**. A current-compensation terminal COMI has a second compensation network for frequency compensation for the second error amplifier. The second compensation network can also be a capacitor connected to the ground reference level, such as a capacitor **32**. A programmable terminal COMR has a resistor **33** connected to ground to adjust a reference signal V_{REF} for a voltage feedback loop of the control circuit **70** in accordance with the output current I_O . The adjustment of the reference signal V_{REF} is to compensate the voltage drop of the output cable **46** for achieving better load regulation.

FIG. 3 illustrates the control circuit **70** according to an embodiment of the present invention. A first signal V_V and a timing signal S_{DS} is produced by a first circuit **100** by multi-sampling the voltage V_{DET} . The discharge time T_{DS} of the secondary-side switching current I_S is represented by the timing signal S_{DS} . A current signal V_W is generated by a second circuit **300** by measuring the current-sense signal V_{CS} . An oscillation signal PLS is generated by an oscillator **200** for determining a switching frequency of the switching signal V_{PWM} . A second signal V_I is produced by a third circuit **400** by integrating the current signal V_W with the timing signal S_{DS} . A first error amplifier is developed by an operational amplifier **71** and a reference signal V_{REF} for amplifying the first signal V_V and providing a first feedback loop circuit for output voltage control. A second error amplifier is developed by an operational amplifier **72** and a reference signal V_{REF2} for amplifying the second signal V_I and providing a second feedback loop circuit for output current control. An adjust circuit **700** is coupled to the programmable terminal COMR to adjust the reference signal V_{REF} in accordance with a reference signal V_{REF1} and the second signal V_I . A PWM circuit **500** and a plurality of comparators **73** and **75** form a switching control circuit to generate the switching signal V_{PWM} and to control the pulse width of the switching signal V_{PWM} in response to the outputs of the first error amplifier and the second error amplifier. Both of the operational amplifiers **71** and **72** have trans-conductance output. The output of the operational amplifier **71** is connected to the voltage-compensation terminal COMV and a positive input of the comparator **73**. The output of the operational amplifier **72** is connected to the current-compensation terminal COMI and a positive input of the comparator **75**. A negative input of the comparator **73** is connected to an output of an adder **600**. A negative input of the comparator **75** is supplied with a ramp signal RMP that is produced from the oscillator **200**.

A slope signal V_{SLP} is generated by the adder **600** by adding the current-sense signal V_{CS} with the ramp signal RMP. A positive input of a comparator **74** is supplied with a reference signal V_{REF3} . A negative input of the comparator **74** is connected to the sense terminal CS for achieving a cycle-by-cycle current limit. Three inputs of a NAND gate **79** are respectively connected to the outputs of the comparators **73**, **74** and **75**. A reset signal RST is generated by an output of the NAND gate **79**. The reset signal RST is supplied to the PWM circuit **500** for controlling the duty cycle of the switching signal V_{PWM} .

5

The current control loop is formed from the detection of the primary-side switching current I_P to the pulse width modulation of the switching signal V_{PWM} to control the magnitude of the primary-side switching current I_P in response to the reference signal V_{REF2} . The secondary-side switching current I_S is a ratio of the primary-side switching current I_P as shown in equation (4). According to the signal waveforms in FIG. 2, the output current I_O of the switching regulator is the average of the secondary-side switching current I_S . It is expressed by the following:

$$I_O = I_S \times \frac{T_{DS}}{2T} \quad (6)$$

Therefore, the output current (I_O) of the switching regulator is regulated.

The current-sense signal V_{CS} is detected by the second circuit **300**; and the current signal V_W is generated. The second signal V_I is further produced by the third circuit **400** by integrating the current signal V_W with the discharge time T_{DS} . The second signal V_I is thus designed as the following:

$$V_I = \frac{V_W}{2} \times \frac{T_{DS}}{T_I} \quad (7)$$

where the current signal V_W is expressed by the following:

$$V_W = \frac{T_{NS}}{T_{NP}} \times R_S \times I_S \quad (8)$$

where T_I is a time constant of the third circuit **400**.

It is seen from equations (6)-(8), the second signal V_I is rewritten as the following:

$$V_I = \frac{T}{T_I} \times \frac{T_{NS}}{T_{NP}} \times R_S \times I_O \quad (9)$$

It is found that the second signal V_I is proportional to the output current I_O of the switching regulator. The second signal V_I is increased as the output current I_O increases. However, the maximum value of the second signal V_I is limited to the value of the reference signal V_{REF2} through the regulation of the current control loop. Under the feedback control of the current control loop, a maximum output current $I_{O(max)}$ is given by the following:

$$I_{O(max)} = \frac{T_{NP}}{T_{NS}} \times \frac{G_A \times G_{SW} \times V_{REF2}}{1 + \left(G_A \times G_{SW} \times \frac{R_S}{K} \right)} \quad (10)$$

where K is a constant equal to T_f/T , G_A is the gain of the second error amplifier, and G_{SW} is the gain of the switching circuit.

As the loop gain of the current control loop is high ($G_A \times G_{SW} \gg 1$), the maximum output current $I_{O(max)}$ could be briefly defined as the following:

6

$$I_{O(max)} = K \times \frac{T_{NP}}{T_{NS}} \times \frac{V_{REF2}}{R_S} \quad (11)$$

The maximum output current $I_{O(max)}$ of the switching regulator is thus regulated as a constant current in response to the reference signal V_{REF2} .

Besides, a voltage control loop is developed from the sampling of the reflected signal V_{AUX} to the pulse width modulation of the switching signal V_{PWM} , which the magnitude of the reflected signal V_{AUX} is controlled in response to the reference signal V_{REF} . The reflected signal V_{AUX} is a ratio of the output voltage V_O as shown in equation (3). The reflected signal V_{AUX} is further attenuated to the voltage V_{DET} as shown in equation (5). The first signal V_V is generated by the first circuit **100** by multi-sampling the voltage V_{DET} . The value of the first signal V_V is controlled in response to the value of the reference signal V_{REF} through the regulation of the voltage control loop. The loop gain for the voltage control loop is provided by the first error amplifier and the switching circuit. Therefore, the output voltage V_O is briefly defined as the following:

$$V_O = \left(\frac{R_{50} + R_{51}}{R_{50}} \times \frac{T_{NS}}{T_{NA}} \times V_{REF} \right) - V_F \quad (12)$$

The reflected signal V_{AUX} is multi-sampled by the first circuit **100**. The voltage is sampled and measured instantly before the secondary-side switching current I_S is fallen to zero. Therefore, the variation of the secondary-side switching current I_S does not affect the value of the forward voltage drop V_F of the rectifier **40**. However, the voltage drop of the output cable is varied when the output current I_O is changed. The adjust circuit **700** is developed to compensate the voltage drop of the output cable. The resistor **33** is utilized to program a slope to determine the change of the reference signal V_{REF} in response to the change of the second signal V_I . Therefore, the voltage drop is compensated in proportional to the output current I_O . Using different value of the resistor **33**, the compensation can be programmed for a variety of the output cables **46**.

FIG. 4 illustrates the first circuit **100** according to an embodiment of the present invention. A sample-pulse signal is produced by a sample-pulse generator **190** for multi-sampling. A threshold voltage **156** is added up with the reflected signal V_{AUX} to produce a level-shift reflected signal. A first signal generator includes a counter **171**, and the AND gates **165** . . . **166** for producing the sample signals V_{SP1} . . . V_{SPN} . A second signal generator includes a D flip-flop **170**, an NAND gate **163**, an AND gate **164**, and a comparator **155** for producing the timing signal S_{DS} . A time-delay circuit includes an inverter **162**, a current source **180**, a transistor **181**, and a capacitor **182** for generating a delay time T_d as the switching signal V_{PWM} is disabled. An input of an inverter **161** is supplied with the switching signal V_{PWM} . An output of the inverter **161** is connected to an input of the inverter **162**, a first input of the AND gate **164**, and a clock-input of the D flip-flop **170**. The transistor **181** is turned on/off by an output of the inverter **162**. The capacitor **182** is connected in parallel with the transistor **181**. The current source **180** is applied to charge the capacitor **182**. Therefore, the delay time T_d of the time-delay circuit is determined by the current of the current source **180** and the capacitance of the capacitor **182**. An output of the time-delay

circuit is obtained across the capacitor **182**. A D-input of the D flip-flop **170** is pulled high by a supply voltage V_{CC} . An output of the D flip-flop **170** is connected to a second input of the AND gate **164**. The timing signal S_{DS} is outputted by the AND gate **164**. The timing signal S_{DS} is thus enabled as the switching signal V_{PWM} is disabled. The output of the NAND gate **163** is connected to a reset-input of the D flip-flop **170**. Two inputs of the NAND gate **163** are respectively connected to the output of the time-delay circuit and the output of the comparator **155**. A negative input of the comparator **155** is supplied with the level-shift reflected signal. A positive input of the comparator **155** is supplied with a hold voltage V_{HD} . Therefore, after the delay time T_d , the timing signal S_{DS} is disabled once the level-shift reflected signal is lower than the hold voltage V_{HD} . Besides, the timing signal S_{DS} is also disabled as long as the switching signal V_{PWM} is enabled.

The sample-pulse signal is supplied to the counter **171** and the third inputs of the AND gates **165** . . . **166**. The outputs of the counter **171** are respectively connected to the second inputs of the AND gates **165** . . . **166**. The first inputs of the AND gates **165** . . . **166** are supplied with the timing signal S_{DS} . The fourth inputs of the AND gates **165** . . . **166** are connected to the output of the time-delay circuit. Therefore, the sample signals V_{SP1} . . . V_{SPN} are generated in response to the sample-pulse signal. Besides, the sample signals V_{SP1} . . . V_{SPN} are alternately produced during an enabled period of the timing signal S_{DS} . However, the delay time T_d is inserted at the beginning of the timing signal S_{DS} to inhibit the sample signals V_{SP1} . . . V_{SPN} . The sample signals V_{SP1} . . . V_{SPN} are thus disabled during the period of the delay time T_d .

The sample signals V_{SP1} . . . V_{SPN} are used for sampling the reflected signal V_{AUX} in sequence via the detection terminal DET and the divider. The switches **121** . . . **122** are controlled by the sample signals V_{SP1} . . . V_{SPN} for obtaining the hold voltages across the capacitors **110** . . . **111**, respectively. The switches **123** . . . **124** are connected in parallel with the capacitors **110** . . . **111** to discharge the capacitors **110** . . . **111**. A buffer circuit includes the operational amplifiers **150** . . . **151**, the diodes **130** . . . **131**, and a current source **135** for generating the hold voltage V_{HD} . The positive inputs of the operational amplifiers **150** . . . **151** are connected to the capacitors **110** . . . **111**, respectively. The negative inputs of the operational amplifiers **150** . . . **151** are connected to an output of the buffer circuit. The diodes **130** . . . **131** are connected from the output of the operational amplifiers **150** . . . **151** to the output of the buffer circuit. The hold voltage V_{HD} is thus obtained from the higher voltage of hold voltages. The current source **135** is used for the termination. The hold voltage V_{HD} is periodically conducted by a switch **125** to a capacitor **115** for producing the first signal V_P . The switch **125** is turned on/off via the oscillation signal PLS. After the delay time T_d , the sample signals V_{SP1} . . . V_{SPN} are started to produce hold voltages. The spike interference of the reflected signal V_{AUX} are eliminated. The spike interference of the reflected signal V_{AUX} would occur when the switching signal V_{PWM} is disabled and the transistor **20** is turned off.

As the secondary-side switching current I_S falls to zero, the reflected signal V_{AUX} is started to decrease. The aforementioned shall be detected by the comparator **155** to disable the timing signal S_{DS} . Therefore, the pulse width of the timing signal S_{DS} is correlated to the discharge time T_{DS} of the secondary-side switching current I_S . Meanwhile, the sample signals V_{SP1} . . . V_{SPN} are disabled, and the multi-sampling is stopped as the timing signal S_{DS} is disabled. At

the moment, the hold voltage V_{HD} generated at the output of the buffer circuit is thus correlated to the reflected signal V_{AUX} that is sampled once the secondary-side switching current I_S is fallen to zero. The hold voltage V_{HD} is obtained from the higher voltage of hold voltages, which shall ignore the voltage that is sampled when the reflected signal had started to decrease.

FIG. **5** illustrates the oscillator **200** according to an embodiment of the present invention. A first V-to-I converter is formed by an operational amplifier **201**, a resistor **210**, and a transistor **250**. A reference current I_{250} is generated by the first V-to-I converter in response to a reference signal V_R . Current mirrors are formed from a plurality of transistors, for example, transistors **251**, **252**, **253**, **254** and **255** for generating an oscillator charge current I_{253} and an oscillator discharge current I_{255} in response to the reference current I_{250} . The oscillator charge current I_{253} is generated by a drain of the transistor **253**. The oscillator discharge current I_{255} is generated by a drain of the transistor **255**. A switch **230** is connected between the drain of the transistor **253** and a capacitor **215**. A switch **231** is connected between the drain of the transistor **255** and the capacitor **215**. The ramp signal RMP is obtained across the capacitor **215**. A comparator **205** has a positive input connected to the capacitor **215**. The oscillation signal PLS is outputted by the comparator **205**. The switching frequency of the switching signal V_{PWM} is determined by the oscillation signal PLS. A first terminal of a switch **232** is supplied with a high threshold voltage V_H . A first terminal of a switch **233** is supplied a low threshold voltage V_L . A second terminal of the switch **232** and a second terminal of the switch **233** are both connected to a negative input of the comparator **205**. An input of an inverter **260** is connected to an output of the comparator **205** for producing an inverse oscillation signal /PLS. The switch **231** and the switch **233** are turned on/off by the oscillation signal PLS. The switch **230** and the switch **232** are turned on/off by the inverse oscillation signal /PLS. The resistance R_{210} of the resistor **210** and the capacitance C_{215} of the capacitor **215** are to determine a switching period T of the switching frequency:

$$T = \frac{C_{215} \times V_{OSC}}{V_R / R_{210}} = R_{210} \times C_{215} \times \frac{V_{OSC}}{V_R} \quad (13)$$

where $V_{OSC} = V_H - V_L$.

FIG. **6** illustrates the second circuit **300** according to an embodiment of the present invention. A fourth circuit includes a comparator **310**, a current source **320**, a plurality of switches **330**, **340**, and a capacitor **361**. The peak value of the current-sense signal V_{CS} is sampled for generating a fourth signal. A positive input of the comparator **310** is supplied with the current-sense signal V_{CS} . A negative input of the comparator **310** is connected to the capacitor **361**. The switch **330** is connected between the current source **320** and the capacitor **361**. The switch **330** is turned on/off by an output of the comparator **310**. The switch **340** is connected in parallel with the capacitor **361** for discharging the capacitor **361**. The fourth signal is periodically conducted by a switch **350** to a capacitor **362** for producing the current signal V_W . The switch **350** is turned on/off by the oscillation signal PLS.

FIG. **7** illustrates the third circuit **400** according to an embodiment of the present invention. A second V-to-I converter includes an operational amplifier **410**, a resistor **450**, and the transistors **420**, **421**, **422**. A positive input of the

operational amplifier **410** is supplied with the current signal V_W . A negative input of the operational amplifier **410** is connected to the resistor **450**. A gate of the transistor **420** is driven by an output of the operational amplifier **410**. A source of the transistor **420** is coupled to the resistor **450**. A current I_{420} is generated by the second V-to-I converter via a drain of the transistor **420** in response to the current signal V_W . A current mirror having a 2:1 ratio is formed by the transistors **421** and **422**. The current mirror is driven by the current I_{420} to produce a programmable charge current I_{PRG} via a drain of the transistor **422**. The programmable charge current I_{PRG} is expressed by the following:

$$I_{PRG} = \frac{1}{R_{450}} \times \frac{V_W}{2} \quad (14)$$

where R_{450} is the resistance of the resistor **450**.

A capacitor **471** is used to produce an integrated signal. A switch **460** is connected between the drain of the transistor **422** and the capacitor **471**. The switch **460** is turned on/off by the timing signal S_{DS} . A switch **462** is connected in parallel with the capacitor **471** for discharging the capacitor **471**. The integrated signal is periodically conducted by a switch **461** to a capacitor **472** for producing the second signal V_I . The switch **461** is turned on/off by the oscillation signal PLS. The second signal V_I is therefore obtained across the capacitor **472** as shown:

$$V_I = \frac{1}{R_{450} \times C_{471}} \times \frac{V_W}{2} \times T_{DS} \quad (15)$$

According to an embodiment of the present invention illustrated in FIG. 4~7, the second signal V_I is correlated to the secondary-side switching current I_S and the output current I_O of the switching regulator. Thus, the equation (9) is rewritten as the following:

$$V_I = m \times \frac{T_{NS}}{T_{NP}} \times R_S \times I_O \quad (16)$$

where m is a constant, which is determined by the following:

$$m = \frac{R_{210} \times C_{215}}{R_{450} \times C_{471}} \times \frac{V_{OSC}}{V_R} \quad (17)$$

The resistance R_{450} of the resistor **450** is correlated to the resistance R_{210} of the resistor **210**. The capacitance C_{471} of the capacitor **471** is correlated to the capacitance C_{215} of the capacitor **215**. Therefore, the second signal V_I is proportional to the output current I_O of the switching regulator.

FIG. 8 illustrates a circuit schematic of the PWM circuit **500** according to an embodiment of the present invention. The PWM circuit **500** includes a NAND gate **511**, a D flip-flop **515**, an AND gate **519**, a blanking circuit **520**, and the inverters **512**, **518**. A D-input of the D flip-flop **515** is pulled high by the supply voltage V_{CC} . An input of the inverter **512** is driven by the oscillation signal PLS. An output of the inverter **512** is connected to a clock-input of the D flip-flop **515** for enabling the switching signal V_{PWM} . An output of the D flip-flop **515** is connected to a first input of

the AND gate **519**. A second input of the AND gate **519** is coupled to the output of the inverter **512**. The switching signal V_{PWM} is outputted by the AND gate **519** to switch the transformer **10**. A reset-input of the D flip-flop **515** is connected to an output of the NAND gate **511**. A first input of the NAND gate **511** is supplied with the reset signal RST for the cycle-by-cycle disabling of the switching signal V_{PWM} . The second input of the NAND gate **511** is connected to an output of the blanking circuit **520** for ensuring a minimum on-time of the switching signal V_{PWM} when the switching signal V_{PWM} is enabled. A minimum value of the discharge time T_{DS} is ensured by the minimum on-time of the switching signal V_{PWM} , which a proper multi-sampling of the reflected signal V_{AUX} in the first circuit **100** is ensured. The discharge time T_{DS} is correlated to the on-time of the switching signal V_{PWM} . Referring to equations (1), (2), and (4), and the secondary inductance L_S , which is shown in equation (18), the discharge time T_{DS} is expressed as equation (19) as shown in the following:

$$L_S = (T_{NS} / T_{NP})^2 \times L_P \quad (18)$$

$$T_{DS} = \left(\frac{V_{IN}}{V_O + V_F} \right) \times \frac{T_{NS}}{T_{NP}} \times T_{ON} \quad (19)$$

where T_{ON} is the on-time of the switching signal V_{PWM} .

An input of the blanking circuit **520** is supplied with the switching signal V_{PWM} . When the switching signal V_{PWM} is enabled, the blanking circuit **520** shall generate a blanking signal V_{BLK} to inhibit the reset of the D flip-flop **515**. The blanking circuit **520** further includes a NAND gate **523**, a current source **525**, a capacitor **527**, a transistor **526**, and a plurality of inverters **521**, **522**. The switching signal V_{PWM} is supplied to an input of the inverter **521** and the first input of the NAND gate **523**. The current source **525** is applied to charge the capacitor **527**. The capacitor **527** is connected in parallel with the transistor **526**. The transistor **526** is turned on/off by an output of the inverter **521**. An input of the inverter **522** is coupled to the capacitor **527**. An output of the inverter **522** is connected to a second input of the NAND gate **523**. The blanking signal V_{BLK} is outputted by an output of the NAND gate **523**. The pulse width of the blanking signal V_{BLK} is determined by the current of the current source **525** and the capacitance of the capacitor **527**. An input of an inverter **518** is connected to the output of the NAND gate **523**. A clear signal (CLR) is generated by an output of the inverter **518** to turn on/off the switches **123**, **124**, **340** and **462**.

FIG. 9 illustrates a circuit schematic of the adder **600** according to an embodiment of the present invention. A third V-to-I converter is formed by an operational amplifier **610**, a plurality of transistors **620**, **621**, **622**, and a resistor **650** for generating a current I_{622} in response to the ramp signal RMP. A positive input of an operational amplifier **611** is supplied with the current-sense signal V_{CS} . A negative input and an output of the operational amplifier **611** are connected together to build the operational amplifier **611** as a buffer. A drain of the transistor **622** is connected to the output of the operational amplifier **611** via a resistor **651**. The slope signal V_{SLP} is generated at the drain of the transistor **622**. The slope signal V_{SLP} is therefore correlated to the ramp signal RMP and the current-sense signal V_{CS} .

FIG. 10 illustrates a circuit schematic of the adjust circuit **700** according to an embodiment of the present invention. A V-to-I converter is formed by an operational amplifier **710**,

11

a plurality of transistors **711**, **714**, **715**, and a resistor **712** for generating a current I_{715} in response to the second signal V_J . A positive input of an operational amplifier **710** is supplied with the second signal V_J . The current I_{715} is outputted to the programmable terminal COMR. The current I_{715} is associated with the resistor **33** which generates a voltage V_{COMR} connected to an operational amplifier **720**. Another V-to-I converter is formed by the operational amplifier **720**, a plurality of transistors **721**, **724**, **725**, and a resistor **722** for generating a current I_{725} at the drain of the transistor **725** in response to the voltage V_{COMR} . A negative input and an output of the operational amplifier **750** are connected together to build the operational amplifier **750** as a buffer. The positive input of the operational amplifier **750** is connected to the reference signal V_{REF1} . A drain of the transistor **725** is connected to the output of the operational amplifier **750** via a resistor **760**. The reference signal V_{REF} is generated at the drain of the transistor **725**. Based on the reference signal V_{REF1} , the reference signal V_{REF} is adjusted by the second signal V_J and is programmed by the resistor **33**.

It will be apparent to those skilled in the art that various modifications and variations can be made to the structure of the present invention without departing from the scope or spirit of the invention. In view of the foregoing, it is intended that the present invention covers modifications and variations of this invention provided they fall within the scope of the following claims and their equivalents.

What is claimed is:

1. A primary-side controlled switching regulator, comprising:

a transformer, for transferring the energy from a primary-side to a secondary side of the transformer;
 a switching device, for switching the transformer;
 a control circuit, coupled to the transformer for generating a switching signal to switch the switching device and to regulate the output of the switching regulator;

wherein the control circuit including:

a first circuit, coupled to the transformer for generating a first signal and a timing signal by measuring a reflected signal of the transformer, and wherein the timing signal represents a discharge time of the transformer;

a second circuit and a third circuit producing a second signal by integrating a current signal with the timing signal, and wherein the current signal represents a primary-side switching current of the transformer;

a first error amplifier, having a first reference signal for generating a first feedback signal in response to the first signal; and wherein the first reference signal is increased in response to the increase of the second signal;

a second error amplifier, having a second reference signal for generating a second feedback signal in response to the second signal; and

a switching control circuit, generating the switching signal in response to the first feedback signal and the second feedback signal.

2. The primary-side controlled switching regulator as claimed in claim 1, wherein the control circuit further comprising:

a supply terminal and a ground terminal, for receiving power;

a detection terminal, for connecting the first circuit to the transformer through a resistor of a divider;

a sense terminal, for connecting the second circuit to a current-sense device for receiving the current signal, and the current-sense device is used for converting the primary-side switching current to the current signal;

12

an output terminal, for generating the switching signal to switch the transformer via the switching device;

a voltage-compensation terminal, connected to a first-compensation network for the frequency compensation for the first error amplifier;

a current-compensation terminal, connected to a second-compensation network for the frequency compensation for the second error amplifier; and

a programmable terminal, connected a resistor to ground to determine a slope, wherein the slope represents the change of the first reference signal versus the change of the second signal.

3. The primary-side controlled switching regulator as claimed in claim 1, wherein a time constant of the third circuit is correlated with a switching period of the switching signal.

4. The primary-side controlled switching regulator as claimed in claim 1, wherein the first circuit comprising:

a threshold voltage, wherein the threshold voltage adds to the reflected signal to produce a level-shift signal;

a plurality of capacitors;

a signal generator, producing sample signals, wherein the sample signals are used for sampling the reflected signal, and hold voltages are respectively generated across the capacitors, and the sample signals are generated in sequence during an enabled period of the timing signal;

a buffer circuit, generating a hold signal from the higher voltage of hold voltages;

a first output capacitor, for generating the first signal in response to the hold signal;

a second signal generator, producing the timing signal, wherein the timing signal is enabled as the switching signal is disabled, and the timing signal is disabled when the level-shift signal is lower than the hold signal.

5. The primary-side controlled switching regulator as claimed in claim 1, wherein the first circuit multi-sampling the reflected signal to generate the first signal, and the first signal is obtained instantly once the discharge current of the transformer is fallen to zero.

6. The primary-side controlled switching regulator as claimed in claim 1, wherein the second circuit comprising:

a fourth circuit, generating a fourth signal by sampling the current signal;

a third capacitor, holding the fourth signal;

a second output capacitor, producing a current waveform signal; and

a switch, conducting the fourth signal to the second output capacitor.

7. The primary-side controlled switching regulator as claimed in claim 1, wherein the third circuit comprising:

a V-to-I converter, generating a charge current in response to the current waveform signal;

a timing capacitor, coupled to the charge current via a first switch to produce an integrated signal in response to the timing signal;

a second switch, connected in parallel with the timing capacitor for discharging the timing capacitor;

a third output capacitor, producing the second signal; and
 a third switch, conducting the integrated signal to the third output capacitor.

8. The primary-side controlled switching regulator as claimed in claim 1, wherein the switching signal has a minimum on-time when the switching signal is enabled, which further ensuring a minimum value of the discharge time for multi-sampling the reflected signal.

13

9. A switching regulator, comprising:
 a transformer, for transferring the energy from a primary-side to a secondary side of the transformer;
 a switching device, for switching the transformer;
 a control circuit, coupled to the transformer for generating a switching signal to switch the switching device and regulate the output of the switching regulator;
 wherein the control circuit including:
 a first circuit, coupled to the transformer to generate a first signal and a timing signal by measuring a reflected signal of the transformer, and the timing signal represents a discharge time of the transformer;
 a second circuit, producing a second signal by integrating a current signal with the timing signal, and the current signal represents a primary-side switching current of the transformer;
 a first feedback circuit, for generating a first feedback signal in response to the first signal;
 a second feedback circuit, for generating a second feedback signal in response to the second signal; and
 a switching control circuit, generating the switching signal in response to the first feedback signal and the second feedback signal.

10. The switching regulator as claimed in claim 9, wherein the first feedback circuit further comprising a first reference signal for generating the first feedback signal in response to the first signal and the first reference signal, and the first reference signal is varied in response to the change of the second signal.

11. The switching regulator as claimed in claim 9, wherein the control circuit further comprising:
 a supply terminal and a ground terminal, for receiving power;
 a detection terminal, for coupling the first circuit to the transformer;
 a sense terminal, for coupling the second circuit to a current-sense device for receiving the current signal, wherein the current-sense device is used for converting the primary-side switching current to the current signal;
 an output terminal, for generating the switching signal for switching the transformer via the switching device;
 a voltage-compensation terminal, for the frequency compensation of the first feedback circuit; and
 a current-compensation terminal, for the frequency compensation of the second feedback circuit.

12. The switching regulator as claimed in claim 9, wherein the first circuit comprising:
 a threshold voltage, wherein the threshold voltage adding the reflected signal for producing a level-shift signal;
 a plurality of capacitors;
 a signal generator, producing sample signals to sample and to hold the reflected signal to the capacitors, wherein hold voltages are respectively generated across the capacitors, and sample signals are generated in response to the enabling of the timing signal;
 a buffer circuit, generating the first signal in accordance with the hold voltages;
 a second signal generator, producing the timing signal in response to hold voltages and the level-shift signal, wherein the timing signal is enabled as the switching signal is disabled, and the timing signal is disabled when the level-shift signal is lower than the hold voltages.

13. The switching regulator as claimed in claim 9, wherein the first circuit multi-sampling the reflected signal

14

to generate the first signal, and the first signal is acquired after the discharge current of the transformer is fallen to zero.

14. The primary-side controlled switching regulator as claimed in claim 9, wherein the second circuit comprising:
 a current generator, generating a charge current by sampling the current signal; and
 a capacitor, coupled to the charge current for producing the second signal in response to the timing signal.

15. The switching regulator as claimed in claim 9, wherein the switching signal has a minimum on-time when the switching signal is enabled, which further ensuring a minimum value of the discharge time for multi-sampling the reflected signal.

16. A switching power converter, comprising:
 a transformer, for transferring the energy from a primary-side to a secondary side of the transformer;
 a switching device, for switching the transformer;
 a control circuit, coupled to the transformer for generating a switching signal to switch the switching device and to regulate the output of the switching regulator;
 wherein the control circuit including:
 a first circuit, coupled to the transformer for generating a first signal by measuring a reflected signal of the transformer;
 a second circuit, producing a second signal in response to a current signal, wherein the current signal represents a primary-side switching current of the transformer;
 a first feedback circuit, generating a first feedback signal in response to the first signal;
 a second feedback circuit, generating a second feedback signal in response to the second signal; and
 a switching control circuit, generating the switching signal in response to the first feedback signal and the second feedback signal.

17. The switching power converter as claimed in claim 16, wherein the first feedback circuit further including a first reference signal for generating the first feedback signal in response to the first signal, and the first reference signal is varied in response to the change of the second signal.

18. The switching power converter as claimed in claim 16, wherein the control circuit further comprising:
 a supply terminal and a ground terminal, for receiving power;
 a detection terminal, for connecting the first circuit to the transformer through a resistor of a divider;
 a sense terminal, for connecting the second circuit to a current-sense device for receiving the current signal, wherein the current-sense device is used for converting the primary-side switching current to the current signal;
 an output terminal, for generating the switching signal to switch the transformer via the switching device;
 a first-compensation terminal, for the frequency compensation of the first feedback circuit; and
 a second-compensation terminal, for the frequency compensation of the second feedback circuit.

19. The switching power converter as claimed in claim 16, wherein the first circuit comprising:
 a plurality of capacitors;
 a signal generator, producing sample signals to sample and to hold the reflected signal to the capacitors, wherein hold voltages are respectively generated across the capacitors; and sample signals are generated in response to the enabling of a timing signal;
 a buffer circuit, generating the first signal in accordance with the hold voltages;

15

a second signal generator, producing the timing signal in response to hold voltage, wherein the timing signal is enabled as the switching signal is disabled, and the timing signal is disabled when the reflected signal is significantly lower than the hold signal.

20. The switching power converter as claimed in claim 16, wherein the first circuit multi-sampling the reflected signal for generating the first signal, and the first signal is acquired once the discharge current of the transformer is fallen to zero.

21. The switching power converter as claimed in claim 16, wherein the switching signal has a minimum on-time when the switching signal is enabled, which further ensuring a minimum value of the discharge time for multi-sampling the reflected signal.

22. A switching regulator, comprising:

a transformer, for transferring the energy from a primary-side to a secondary side of the transformer;

a switching device, for switching the transformer;

a control circuit, coupled to the transformer for generating a switching signal for switching the switching device and regulating the output of the switching regulator; wherein the control circuit including:

a first circuit, coupled to the transformer to generate a first signal by measuring a reflected signal of the transformer;

a second circuit, producing a second signal by measuring a current signal, wherein the current signal is correlated to the output current of the switching regulator;

a feedback circuit, including a reference signal for generating a feedback signal in response to the first signal and the reference signal, and the reference signal is varied in response to the second signal; and

a switching control circuit, generating the switching signal in response to the feedback signal.

23. The switching regulator as claimed in claim 22, wherein the first circuit comprises:

a plurality of capacitors;

a signal generator producing sample signals to sample and to hold the reflected signal to the capacitors, wherein hold voltages are respectively generated across the capacitors, and samples signals are generated in response to the enable of a timing signal;

a buffer circuit, generating the first signal in accordance with the hold voltages;

16

a second signal generator, producing the timing signal in response to hold voltage, wherein the timing signal is enabled as the switching signal is disabled; the timing signal is disabled when the reflected signal is significant lower than the hold signal.

24. The switching regulator as claimed in claim 22, wherein the first circuit multi-sampling the reflected signal for generating the first signal, and the first signal is acquired once the discharge current of the transformer is fallen to zero.

25. The switching regulator as claimed in claim 22, wherein the second circuit comprising:

a current generator, generating a charge current in response to the current signal; and

a capacitor, coupled to the charge current for producing the second signal in response to the timing signal.

26. The switching regulator as claimed in claim 22, wherein the switching signal has a minimum on-time when the switching signal is enabled, which further ensuring a minimum value of the discharge time for multi-sampling the reflected signal.

27. A switching regulator, comprising:

a transformer, for transferring the energy from a primary-side to a secondary side of the transformer;

a switching device, for switching the transformer;

a control circuit, coupled to the transformer for generating a switching signal to switch the switching device and to regulate the output of the switching regulator;

wherein the control circuit including:

a first circuit, coupled to the transformer for generating a first signal by measuring a reflected signal of the transformer;

a second circuit, producing a second signal by measuring a current signal, wherein the current signal is correlated to the output current of the switching regulator;

a feedback circuit, generating a feedback signal in response to the first signal, and the first signal is varied in response to the second signal; and

a switching control circuit, generating the switching signal in response to the feedback signal.

* * * * *