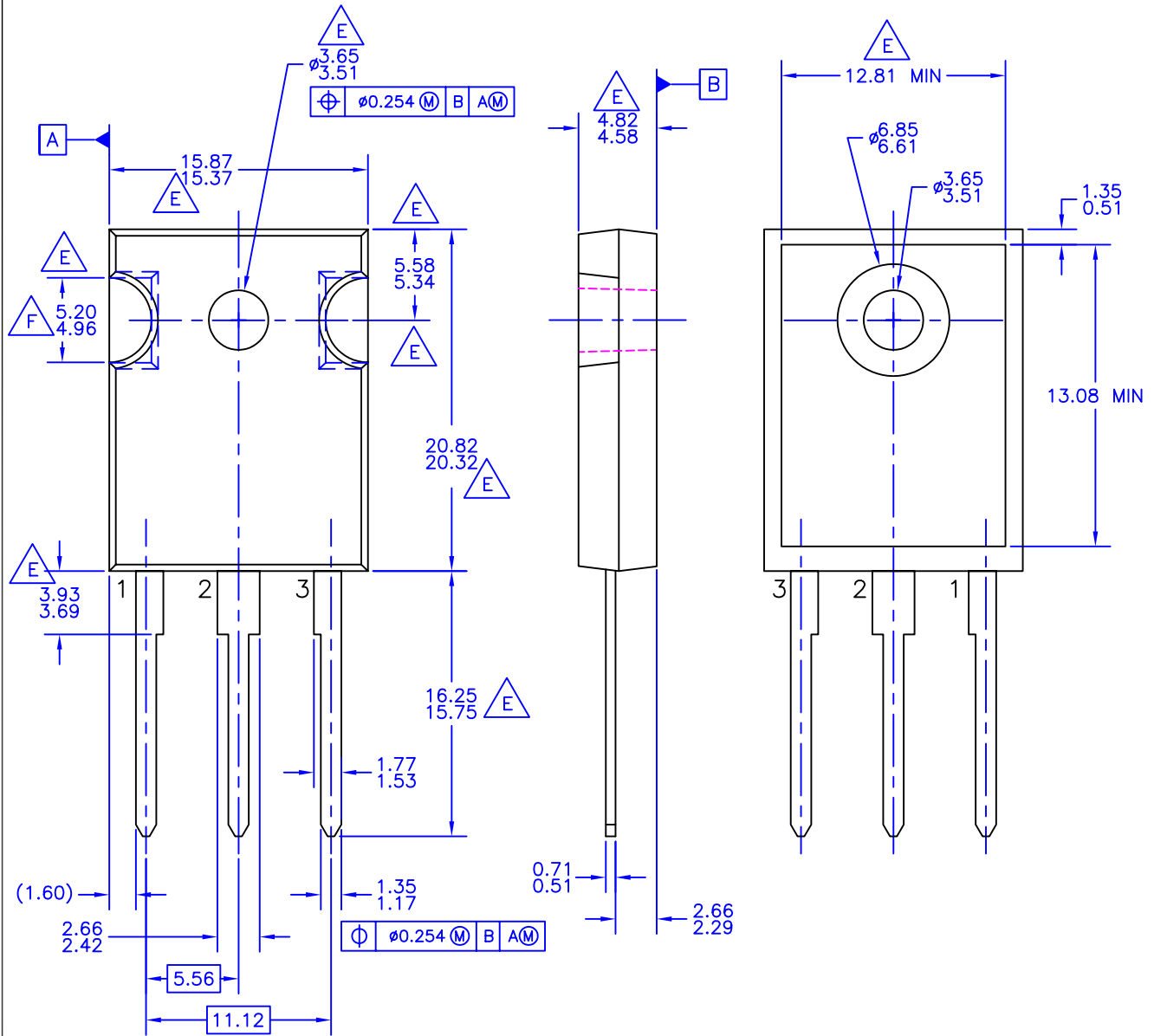


THIS DRAWING IS THE PROPERTY OF FAIRCHILD SEMICONDUCTOR CORPORATION. NO USE THEREOF SHALL BE MADE OTHER THAN AS A REFERENCE FOR PROPOSALS AS SUBMITTED TO FAIRCHILD SEMICONDUCTOR CORPORATION FOR JOBS TO BE EXECUTED IN CONFORMITY WITH SUCH PROPOSALS UNLESS THE CONSENT OF SAID FAIRCHILD SEMICONDUCTOR CORPORATION HAS PREVIOUSLY BEEN OBTAINED. NO PART OF THIS DRAWING SHALL BE COPIED OR DUPLICATED OR ITS CONTENTS DISCLOSED. THE INFORMATION CONTAINED ON THIS DRAWING IS CONFIDENTIAL AND PROPRIETARY.

REVISIONS				
LTR	DESCRIPTION	E.C.N.	DATE	BY/APP'D
A	RELEASE TO DOCUMENT CONTROL	CB/27805	22DEC2005	RMF/FSCP
2	CHANGE DIM FROM 13.46 TO 12.81 CHANGE TO NUMERICAL REVISION/1 REMOVE SITE ADDRESS & FOLLOW NOTES AS PER MKT-FSC-0001_REV_05		17MAR2008	SDL/EE/FSSZ



- NOTES: UNLESS OTHERWISE SPECIFIED
- A. PACKAGE REFERENCE: JEDEC TO-247, ISSUE E, VARIATION AB, DATED JUNE, 2004.
 - B. DIMENSIONS ARE EXCLUSIVE OF BURRS, MOLD FLASH, AND TIE BAR EXTRUSIONS.
 - C. ALL DIMENSIONS ARE IN MILLIMETERS.
 - D. DRAWING CONFORMS TO ASME Y14.5 - 1994

- E.** DOES NOT COMPLY JEDEC STANDARD VALUE
- F.** NOTCH MAY BE SQUARE
- G.** DRAWING FILENAME: MKT-TO247A03_REV02

APPROVALS	DATE	FAIRCHILD SEMICONDUCTOR™			
DRAWN: BOBOY MALDO	17MAR2008	TO-247, MOLDED, 3 LEADS, JEDEC OPTION AB			
CHECKED: FRED REN					
APPROVED: SD LEE					
H. ALLEN					
		SCALE 1:1	SIZE N/A	DRAWING NUMBER MKT-TO247A03	REV 2
		FORMERLY: N/A		SHEET : 1 OF 1	