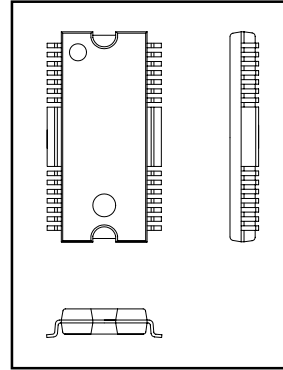
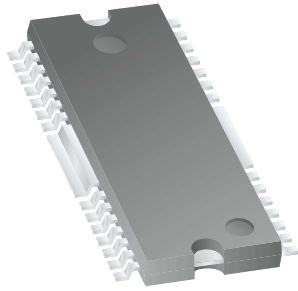


# SSOPH-28 (375SG2) Package Dimensions



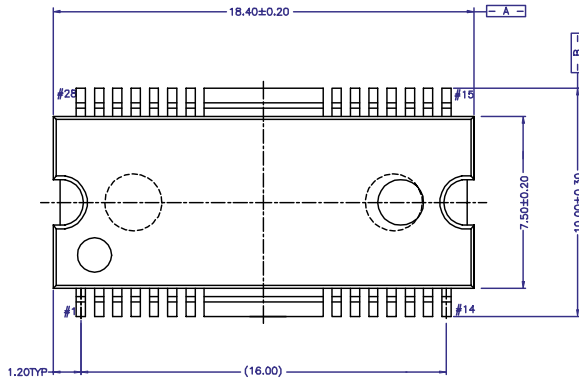
## SSOPH-28 (375SG2)



Scale 1:1 on letter size paper

Dimensions shown below are in:  
inches [millimeters]

Part Weight per unit (gram): 0.65



NOTE ;

1. CONTROLLING DIMENSIONS ARE MM. ( ) IS REFERENCE.
2. DIMENSIONING AND TOLERANCING PER ANSI Y 14.5M - 1982.
3. "A" AND "B" ARE REFERENCE DATUMS ON THE MOLDED BODY AND DO NOT INCLUDE MOLD FLASH/PROTRUSIONS. MOLD FLASH/PROTRUSIONS AT "A" SHALL NOT EXCEED 0.152MM(0.006") PER SIDE. INTER-LEAD FLASH/PROTRUSIONS AT "B" SHALL NOT EXCEED 0.254MM(0.010") PER SIDE.
4. PIN NUMBERS START WITH PIN #1 AND CONTINUE COUNTERCLOCKWISE TO PIN #28 WHEN VIEWED FROM TOP.

