

# WLCSP Packing - Embossed Tape FDZ8040L

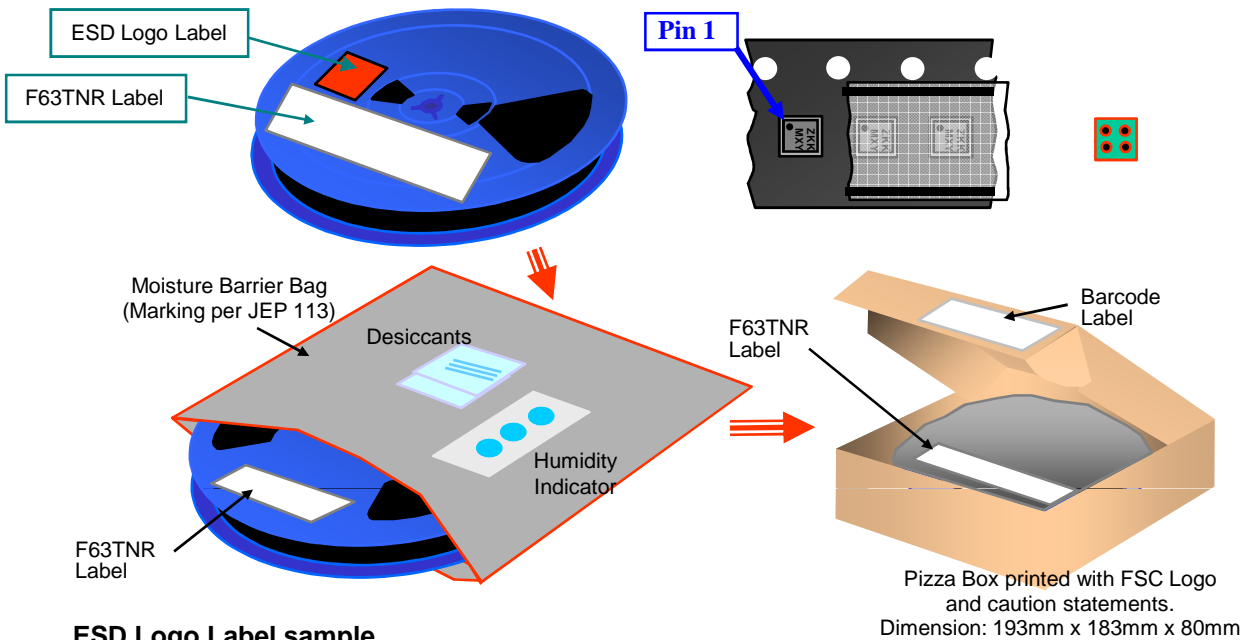


## Packing Description:

WLCSP products are classified under Moisture Sensitive Level 1 and are packed in moisture barrier bag for added protection.

The carrier tape is made from dissipative polystyrene or polycarbonate resin. The cover tape is a multilayer film primarily composed of polyester film, adhesive layer, heat activated sealant, and anti-static sprayed agent. These reeled parts in standard option are shipped with 3000 units per 178 mm diameter reel. Up to three reels are packed in each intermediate box. The reels is made of polystyrene plastic (anti-static coated or intrinsic).

These full reels are individually barcode labeled and placed inside a pizza box made of recyclable corrugated brown paper with a Fairchild logo printing. The reel is packed single reel in the pizza box. And these pizza boxes are placed inside a barcode labeled shipping box which comes in different sizes depending on the number of parts shipped.



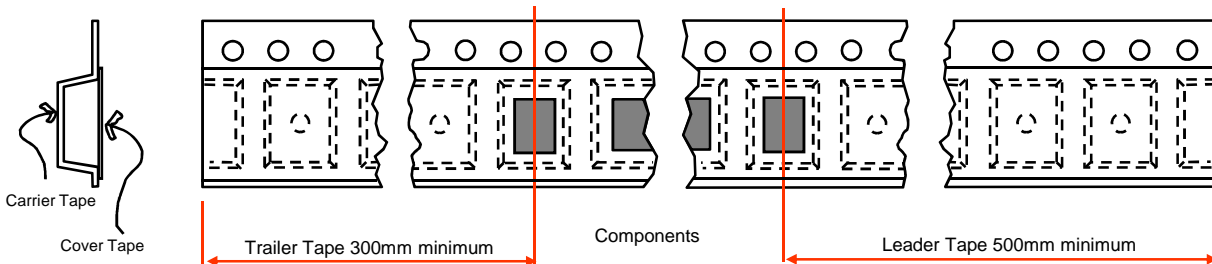
## ESD Logo Label sample



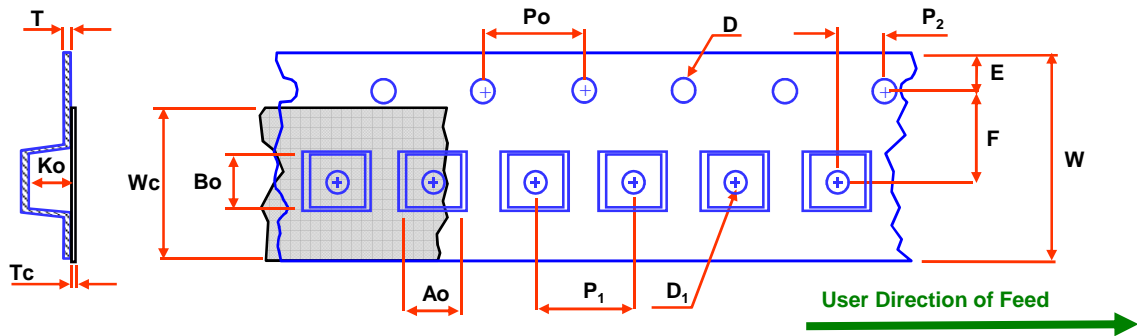
## F63TNR Label sample

LOT: PMH010088888	QTY: 3000
FSID: FDZ8040L	SPEC:
D/C1: P1051AA QTY1:	SPEC REV: 2 <sup>nd</sup> Level Interconnect
D/C2: QTY2:	Green Component
	RoHS COMPLIANT
	1. Category G1
	2. Maximum safe temperature 260 deg C
	3. MSL 1
	FAIRCHILD SEMICONDUCTOR (F63TNR)6.0

## Tape Leader and Trailer Configuration



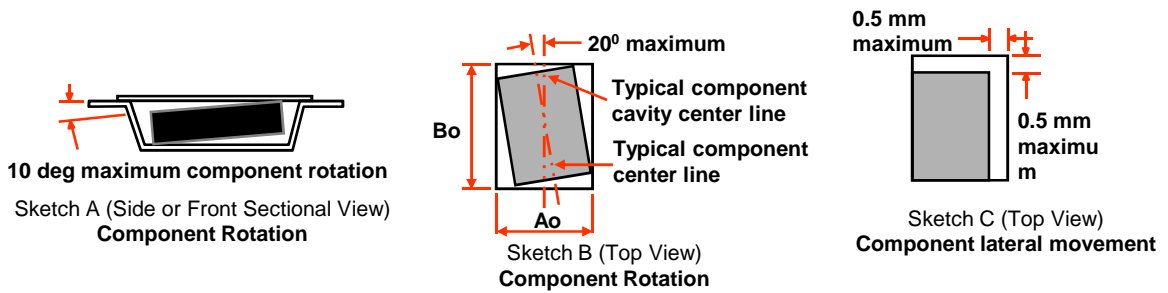
### WLCSP Embossed Tape Dimension



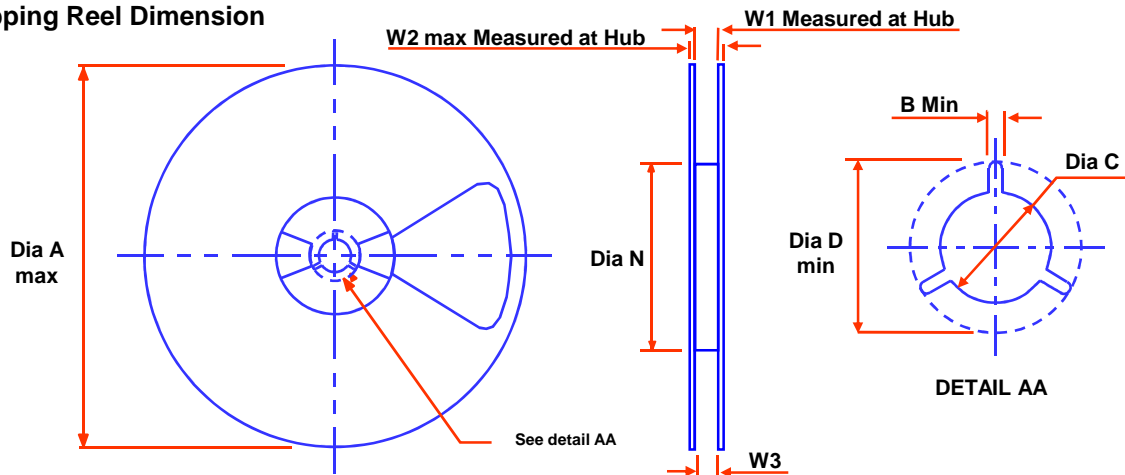
Dimensions are in millimeters

Package	Ao	Bo	D	D <sub>1</sub>	E	F	Ko	P <sub>1</sub>	Po	P <sub>2</sub>	T	Tc	W	Wc
0.8 x 0.8 mm	+/-0.05	+/-0.05	+/-0.10	min.	+/-0.1	+/-0.1	+/-0.05	TYP	TYP	+/-0/05	TYP	+/-0.005	+/-0.3	TYP
0.8 x 0.8 mm	0.90	0.90	1.5	0.5	1.75	3.5	0.61	4	4	2.0	0.25	0.06	8	5.3

Notes: Ao, Bo, and Ko dimensions are determined with respect to the EIA /JEDEC RS-481 rotational and lateral movement requirements (see sketches A, B, and C).



### Shipping Reel Dimension



Dimensions are in millimeters

Tape Width	Dia A max	Dim B min	Dia C +.5/-2	Dia D min	Dim N min	Dim W1 +2/-0	Dim W2 max	Dim W3 (LSL - USL)
8	178	1.5	13	20.2	55	8.4	14.4	7.9-10.4