



Is Now Part of



ON Semiconductor®

To learn more about ON Semiconductor, please visit our website at
www.onsemi.com

ON Semiconductor and the ON Semiconductor logo are trademarks of Semiconductor Components Industries, LLC dba ON Semiconductor or its subsidiaries in the United States and/or other countries. ON Semiconductor owns the rights to a number of patents, trademarks, copyrights, trade secrets, and other intellectual property. A listing of ON Semiconductor's product/patent coverage may be accessed at www.onsemi.com/site/pdf/Patent-Marking.pdf. ON Semiconductor reserves the right to make changes without further notice to any products herein. ON Semiconductor makes no warranty, representation or guarantee regarding the suitability of its products for any particular purpose, nor does ON Semiconductor assume any liability arising out of the application or use of any product or circuit, and specifically disclaims any and all liability, including without limitation special, consequential or incidental damages. Buyer is responsible for its products and applications using ON Semiconductor products, including compliance with all laws, regulations and safety requirements or standards, regardless of any support or applications information provided by ON Semiconductor. "Typical" parameters which may be provided in ON Semiconductor data sheets and/or specifications can and do vary in different applications and actual performance may vary over time. All operating parameters, including "Typicals" must be validated for each customer application by customer's technical experts. ON Semiconductor does not convey any license under its patent rights nor the rights of others. ON Semiconductor products are not designed, intended, or authorized for use as a critical component in life support systems or any FDA Class 3 medical devices or medical devices with a same or similar classification in a foreign jurisdiction or any devices intended for implantation in the human body. Should Buyer purchase or use ON Semiconductor products for any such unintended or unauthorized application, Buyer shall indemnify and hold ON Semiconductor and its officers, employees, subsidiaries, affiliates, and distributors harmless against all claims, costs, damages, and expenses, and reasonable attorney fees arising out of, directly or indirectly, any claim of personal injury or death associated with such unintended or unauthorized use, even if such claim alleges that ON Semiconductor was negligent regarding the design or manufacture of the part. ON Semiconductor is an Equal Opportunity/Affirmative Action Employer. This literature is subject to all applicable copyright laws and is not for resale in any manner.

Dynamic Threshold for Advanced CMOS Logic

Introduction

Most users of digital logic are quite familiar with the threshold specifications found on family logic data sheets. Designers using products with TTL level input thresholds will see numbers like $V_{IH} = 2.0V$ and $V_{IL} = 0.8V$. These threshold guarantees are static, a part's response to these levels during switching transients can be undesirable. Through the course of this paper the reader should gain an understanding for the difference between a static threshold and a dynamic threshold. This paper will also discuss how various products respond dynamically and how dynamic thresholds are tested and specified. Lastly, this paper will look at how FACT Quiet Series™ has addressed and specified dynamic threshold characteristics.

What Is a Dynamic Threshold?

If Fairchild Semiconductor were able to package its I.C.'s in "ideal" packages, then dynamic and static thresholds would be one and the same. However, packages are not "ideal" and have a finite amount of inductance associated with each signal lead. As will be shown later, it is the inductance in the power leads which is the primary reason for dynamic thresholds.

To understand the phenomena of dynamic threshold, properties of ground bounce must first be examined. Figure 1 is a representation for a 74XX00 product which includes package inductance. Figure 2a shows an output pull-down making an HL/ZL transition. In discharging the load capacitor, a current I_C equaling $C \cdot dv/dt$ flows into the chip. This current is approximated versus time in Figure 2b. The changing current, I_C , generates a voltage across the ground inductor represented in Figure 2c. The equation $L \cdot di/dt$ provides the relationship of current and time with respect to a given inductor. It is the voltage across the ground inductor, commonly known as ground bounce, which causes static and dynamic thresholds to differ.

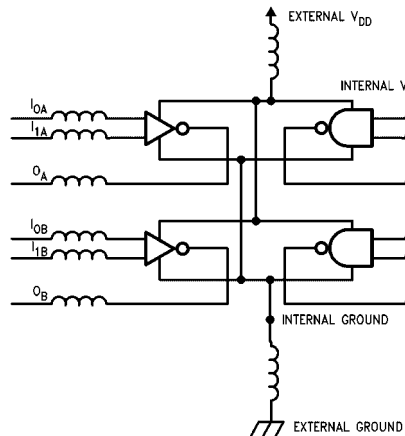


FIGURE 1. A Typical 2-Input Quad NAND Gate

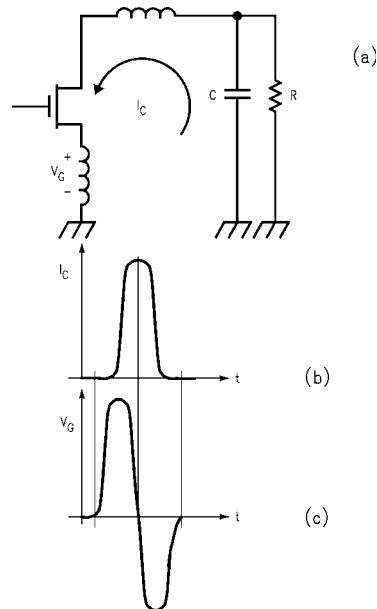


FIGURE 2. Package Inductance Causes Ground Bounce

FACT™, FACT Quiet Series™, Quiet Series™, and GTO™ are trademarks of Fairchild Semiconductor Corporation.

What Is a Dynamic Threshold? (Continued)

The threshold of an IC is referenced to its internal ground. Therefore, voltages induced on the ground inductor are reflected directly as a change in threshold with respect to external ground. Figure 3 shows the effects of ground bounce on an input threshold. A problem area exists if when the threshold is moving, the threshold crosses the input voltage levels. However, having the threshold cross

the input level does not necessarily induce a product failure. The threshold must cross the input level for a period of time for a false switch to occur. (Figure 4 shows the voltage time relationship). Note that in the high speed technologies two things have come together, faster delays and output edge rates. This translates to larger di/dt's and an ability to react to narrower pulses.

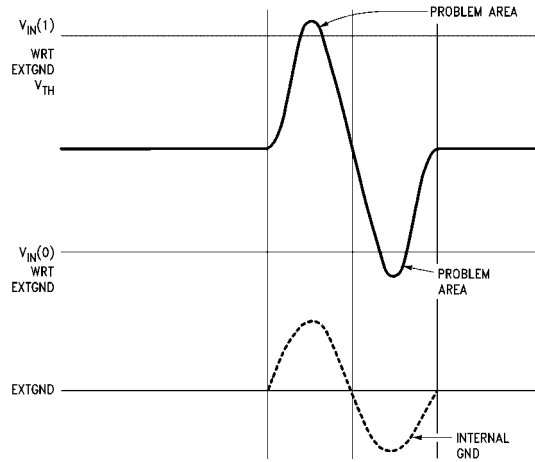


FIGURE 3. Ground Bounce Changes Input Threshold

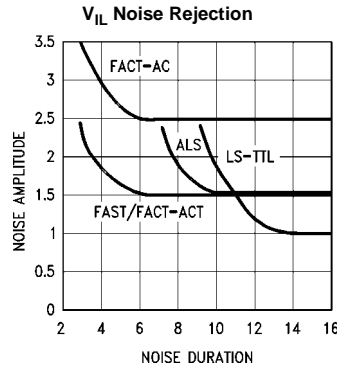


FIGURE 4. Device Speed Effects Noise Margins

In the example discussed above, ground bounce was outlined as the cause for the threshold change. For bipolar TTL technologies, this is the only noise source of concern since the threshold is created by a V_{BE} transistor stack referenced to ground. As V_{CC} changes in a bipolar circuit, the threshold will change logarithmically as the currents in the transistors change. For example, a 1V change in V_{CC} creates approximately a 34 mV shift in threshold. CMOS thresholds are set up as a percentage of V_{DD} and track linearly with V_{DD} changes. Therefore, a noise spike on V_{DD} from an LH/ZH transition generates dynamic threshold

characteristics which must be considered along with those of the HL/ZL edges. In this example let internal ground bounce to a 1V peak; the bipolar threshold will peak to approximately 2.5V. If we consider a TTL level static threshold for a CMOS device input of 1.5V, the following applies: $((V_{TH}/V_{DD} * (V_{DD} - V_{bounce}) + 1.0V) = ((0.3 * (4.0) + 1.0) = 2.2V$. Consider a negative bounce of 1V on the internal V_{DD} bus. The threshold delta for the bipolar product will be negligible, but the CMOS input threshold will change as follows: $((V_{TH}/V_{DD} * (V_{DD} - V_{bounce})) = (0.3 * (4)) = 1.2V$

How are Dynamic Thresholds Specified?

A circuit's dynamic threshold characteristics are quantified with the specifications V_{IHD} and V_{ILD} , where the "D" appendage stands for "dynamic". The definitions are as below:

V_{IHD} The minimum HIGH input level such that normal switching/functional characteristics are observed during output transients.

V_{ILD} The maximum LOW input level such that normal switching/functional characteristics are observed during output transients.

How are Dynamic Thresholds Characterized?

The characterization of dynamic thresholds requires some planning for each product. The test will vary depending upon which edge will generate the supply noise; i.e., is the edge an LH or a ZL? Is the test for a data or control pin? This section discusses the planning process for testing an 74ACQ244, 74ACQ374, and an 74ACT534. From this discussion the reader should be able to test other products and understand FACT Quiet Series dynamic noise specifications.

Test Fixturing/Setup: Dynamic threshold tests are sensitive to the test configuration. The same considerations used to measure AC propagation delays should be exercised. Fairchild Semiconductor uses the same fixturing for both AC propagation delay and noise testing. The inputs for this test are driven with a word generator running at 1 MHz which has been deskewed such that no more than 150 ps exists between signal edges. FACT Quiet Series specifies V_{IHD}/V_{ILD} at 25°C with V_{DD} at 5.0V. For CMOS, true worst case exists where ground bounce is maximized, at cold temperature high V_{DD} . Bipolar circuits are not as straightforward; the threshold has a temperature coefficient which tracks V_{BE} and can change nearly a volt from -55°C to +125°C. The temperature and V_{DD} that create worst case bounce may not induce worst case V_{IHD}/V_{ILD} .

Each product subject to V_{IHD}/V_{ILD} testing will have multiple test possibilities. Through the case studies below, the reader should gain an understanding for some of the test trade-offs.

Case 1:

Product = 74ACTQ244

Test Data Pins with LH/HL Transitions

The algorithm for this test is as follows. Maximize the number of outputs switching, N, in this case 8. N - 1 of the inputs will transition to and from non threshold levels, 0V-3V. The last input will transition from 3V to V_{ILD} or from

0V to V_{IHD} . It should be noted that values of V_{ILD} and V_{IHD} that induce failure will vary as test pin location is varied. This is due mostly to voltage drops on the internal power bussing. As a result, pins farthest from the ground pin, and sometimes the V_{CC} pin, are likely to be worst case pins.

Case 2:

Product = 74ACTQ244

Test Data Pins with ZL/ZH Transitions

This test will ramp the enable pin from 3V-0V while holding the input under test at threshold, i.e., have all outputs transition to ZL, with N - 1 inputs at 0V and the input under test at V_{ILD} . The other tests are as follows: N - 1 transition to ZL under test (PUT) at V_{IHD} , all outputs going ZH and PUT at V_{IHD} , and N - 1 at ZH transition and PUT at V_{ILD} .

Case 3:

Product = 74ACTQ244

Test OE Pin with HL/LH Transitions

V_{ILD} is the parameter to check here. Data inputs should be switching 0V-3V while the OE pin is being stepped up from 0V to V_{ILD} . While testing the OE pin with an LH output transition, the standard 50 pF capacitor in parallel with 500Ω output load can be used. When testing with an HL on the output, the 3-STATE ZL/LZ 500Ω to $V_{CC} * 2$ should be used. Without the pull-up resistor, failure cannot be detected. The LZ and HZ edges create supply noise by switching off currents being sourced or sunk by the device. With standard AC loading, transients are much less than those of the other edges. Therefore, V_{IHD} for the chip is guaranteed by the data pins.

The test cases discussed in cases 1-3 are all possible test methods. Note there are other possible combinations. In practice Fairchild Semiconductor has found that tests done in conjunction with HL transitions are worst case and will guarantee V_{ILD} and V_{IHD} for the chip.

Case 4:

Product = 74ACTQ374

This function, the non-inverting register, will have very good data and clock pin dynamic threshold characteristics. For instance, take the worst case bounce where all outputs are changing HL. To accomplish this, all inputs are LOW on the active edge of clock. If a V_{IHD} test of the clock is to be tested, the positive ground bounce at some level of V_{IHD} will stimulate one, if not multiple, false clocks to occur. A failure is not detected because the false clock or clocks merely regenerated an existing low output. The positive ground bounce had the effect of making the logic low data look lower. Associated with positive bounce is negative bounce. Negative bounce occurs on the HL transition after the positive bounce. If this negative bounce switches the internal data gate, setup and hold times have been violated and again failure is not detected. Reference Figure 5 for a representation of this scenario.

How are Dynamic Thresholds Characterized? (Continued)

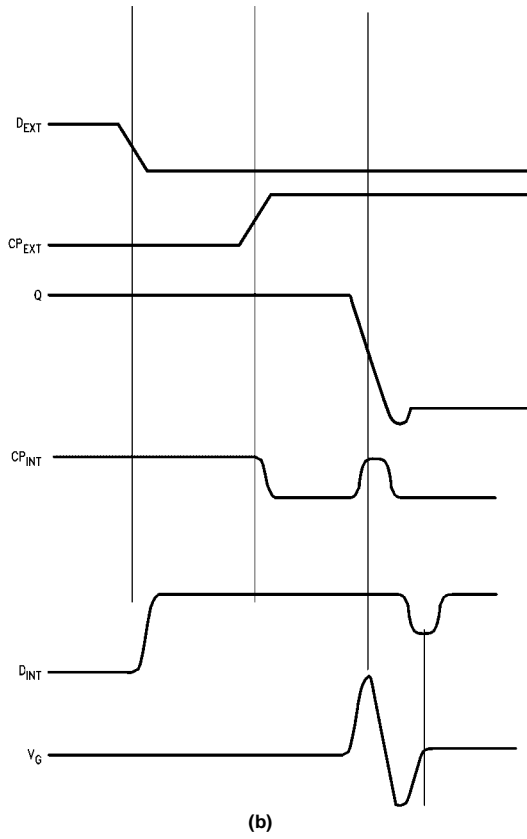
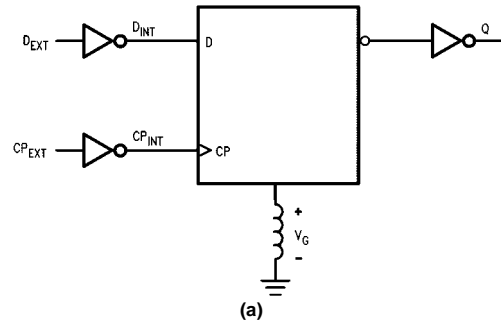


FIGURE 5. Noise Relates to Dynamic Threshold

How are Dynamic Thresholds Characterized? (Continued)

The most rigorous test for the non-inverting flop-flop will be to have the clock held at V_{IH} , data held HIGH, and all outputs transition ZL.

Case 5:

Product = 74ACTQ534

Inverting products inherently have poorer V_{IH}/V_{ILD} characteristics compared to non-inverting. While testing a 240 is straightforward, 534 testing and results require further consideration. While the output is changing, both data and clock are HIGH. If data is held HIGH and clock lowered, false clocks occur, but a failure is not detected. The reverse is also true, as data is lowered, the data gate changes, but no clocks occur. However, as both data and clock HIGH levels are lowered simultaneously a window of V_{IH} failure will be observed.

Figure 6 plots this "window of failure". This plot will be examined by sweeping from right to left. It can be seen that for clock V_{IH} levels down to approximately 2.7V, proper data continues to clock out for data levels down to 1.5V, the static threshold value. For all V_{IH} voltages of the clock below 2.7V, false clocking exists. If data is raised high enough, no internal data changes occur and therefore no failures. As data is lowered, internal data pulses down (Figure 7). The initial internal pulses may not cause device failure either because the voltage has not dropped to a valid logic level or because setup and hold times to the master latch have not been satisfied, but eventually failures are observed. It is interesting to note that were the 74ACT534 to have a more positive hold time (its hold time is slightly negative) the data voltage inducing failure would be much lower.

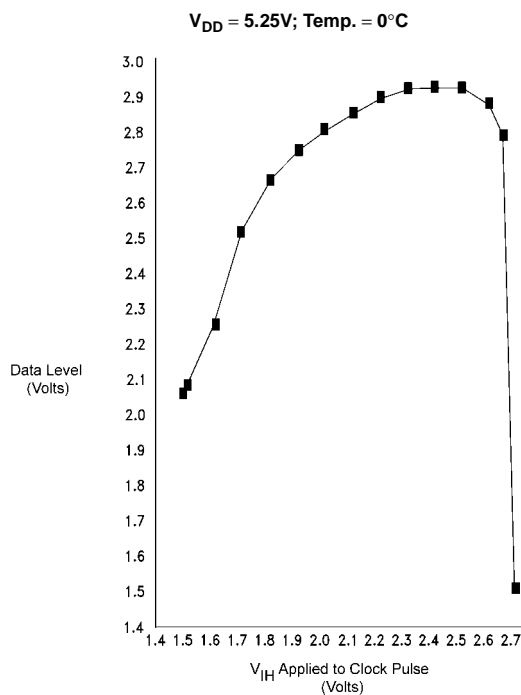


FIGURE 6. 74ACT534 Data/Clock V_{IH} Noise Margin

How are Dynamic Thresholds Characterized? (Continued)

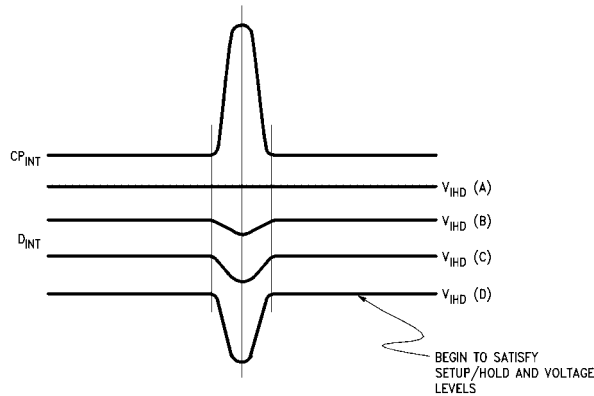


FIGURE 7. Data Input Level Can Cause Output Errors

The implication of the data in Figure 6 is that if the high voltage levels droop to approximately 2.9V on data and 2.7V on the clock simultaneously, a system failure is possible. How can these conditions exist at the same time? The temperature of Figure 6 is 0°C, if the inputs are driven by TTL drivers at a $V_{DD} = 4.5V$, a V_{OH} of 2.6V is possible. However, the V_{CC} of the plot is 5.25V. Assuming the drivers are TTL chips and are on the supply bus, the HIGH levels will be greater than 2.6V. There is another variable to be considered before stating that no problem exists: what termination scheme is being used? If both data and clock signals come from transmission lines using either parallel or thevenin termination, HIGH voltage levels below 2.6V are possible. If either or both of the signals are not terminated, series terminated, or AC terminated then functionality is assured.

How Do Dynamic Threshold Problems Manifest Themselves?

There are a number of modes of failure found during dynamic threshold testing. Firstly, the part can malfunction through a state change. Also possible are oscillations, glitches, AC delay changes, and slew rate degradation. Failure criteria are as follows.

- On an output conditioned LOW, the LOW level will not rise above a LOW TTL threshold LOW (0.8V), after the transition of the output.

- On a HIGH output the HIGH level will not drop below a CMOS threshold HIGH, (3.5V at $V_{DD} = 5.0V$), after the transition of the output.
- If the natural ringing, other than initial switching rail bounce, of the output violates the previous two criteria then the ringing amplitude will be noted. Failure is then defined as a 100 mV movement in the output toward the threshold from the peak ringing amplitude, (Figure 8).
- Gross failures will include functional state changes, oscillations, AC delay changes, and slew rate effects.

How Do Dynamic Threshold Problems Affect Different Functions?

All the products discussed thus far pass the FACT Quiet Series dynamic threshold limits of $V_{IHD} = 2.2V$ and $V_{ILD} = 0.8V$, which are specified as being tested singularly. The case of the 74ACT534 represents one where much effort was required to observe the failure mode. There are classes of product that will display clock V_{IHD} failures readily. These would be products which toggle the outputs independent of data. The most common functions in the list would be counters and shift registers. If the 74ACT299 shift register clock pin were tested, the initial clock edge would shift data inducing ground bounce. If the clock V_{IHD} is low enough, it can be observed that false clocks will continue until all outputs are in the same logic state as the serial data pin.

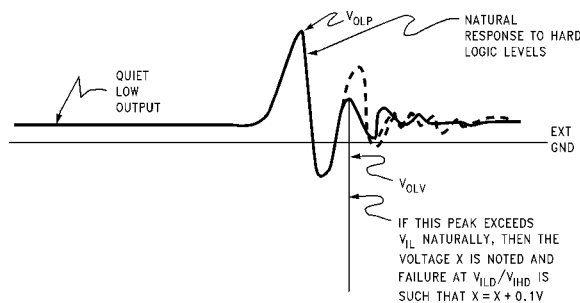


FIGURE 8. Ground Bounce Causes Dynamic Threshold

What Does FACT Quiet Series Do to Address Dynamic Thresholds?

The FACT Quiet Series product utilizes two technical innovations to accomplish its performance. First, by using a split ground bus configuration, input and output grounds are given a degree of isolation. Schematically this is shown in Figure 9a and Figure 9b. The ground bus for inputs stages and outputs sections are separated on chip and only connected by the common inductance near the shoulder of the package and a mutual inductance between the

lead frame fingers. Note, the input and output V_{DD} busses are electrically shorted on chip by the substrate resistance. The lead frame inductance forms a voltage divider such that the input only sees a percentage of the output ground noise. Secondly, a proprietary GTO™ technology, shown in Figure 9c, is used to shape the output edge. This then yields an output voltage waveform shown in Figure 9d. The soft turn-on of the output attenuates the dv/dt , and therefore the di/dt presented to the ground inductance is reduced, yielding a reduction in the ground noise.

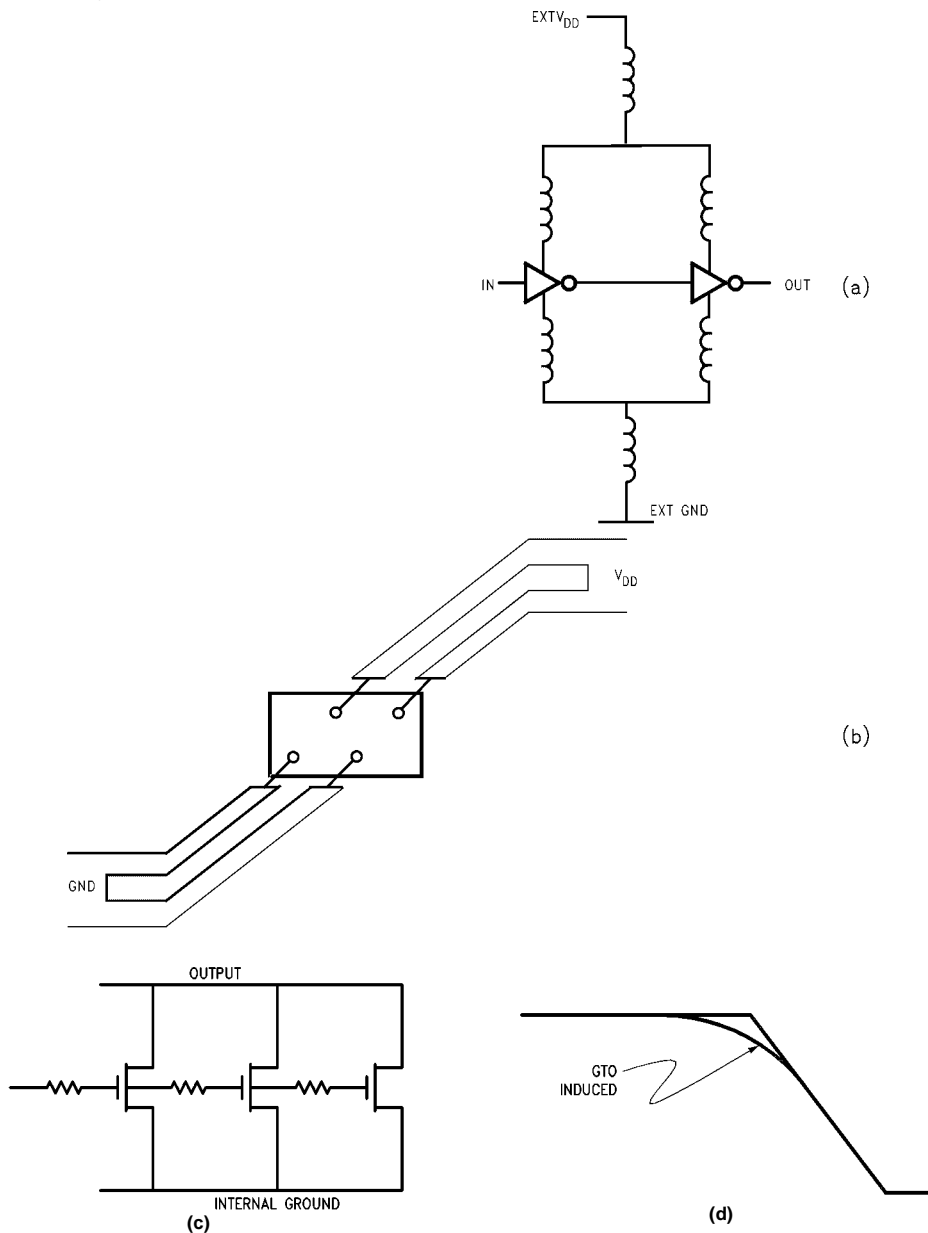


FIGURE 9. Noise Reduction Techniques

How Does Fairchild Semiconductor Compare with Other Vendors?

The characteristics of Fairchild Semiconductor's FACT Quiet Series ensure superior dynamic threshold performance in conventional corner pin packaging. The split

power rail technology used to isolate inputs and outputs addresses a noise issue which goes unresolved in multiple power pin ACL logic families, and most single pin families. Referencing the 74ACT534 already discussed, Figure 10 shows one of the dramatic differences created by the FACT Quiet Series technology.

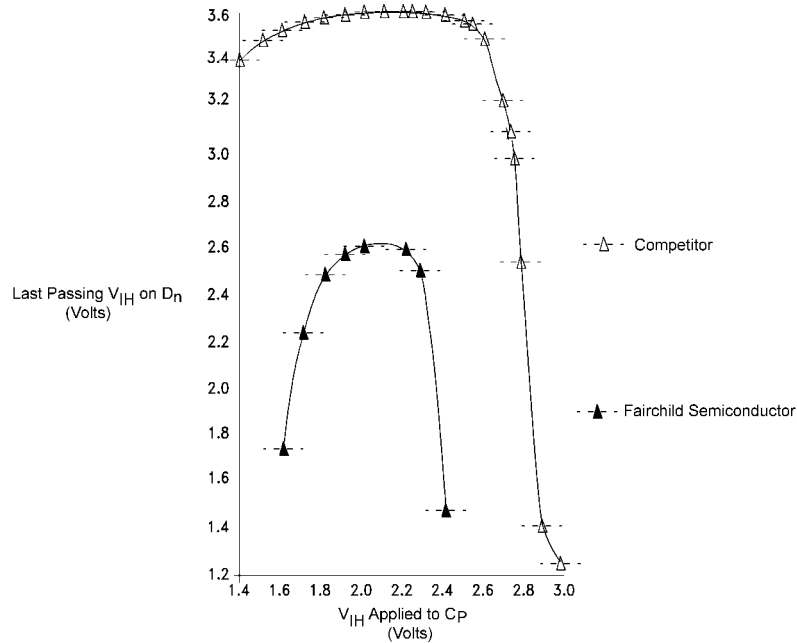


FIGURE 10. Inverting Function Data/Clock V_{IH} Noise Margin Competitor vs. Fairchild Semiconductor 5.0V V_{DD} at 25°C

Summary

With the new advanced CMOS technologies, the specifications and characteristics for dynamic thresholds need to be considered along with the other variables that impact the choice of a device type or family. This applications note has

discussed the theories of test philosophy, failure criteria, and the root causes of dynamic thresholds. This information is intended to provide the systems designer the tools to analyze any impact to design performance.

Fairchild does not assume any responsibility for use of any circuitry described, no circuit patent licenses are implied and Fairchild reserves the right at any time without notice to change said circuitry and specifications.

LIFE SUPPORT POLICY

FAIRCHILD'S PRODUCTS ARE NOT AUTHORIZED FOR USE AS CRITICAL COMPONENTS IN LIFE SUPPORT DEVICES OR SYSTEMS WITHOUT THE EXPRESS WRITTEN APPROVAL OF THE PRESIDENT OF FAIRCHILD SEMICONDUCTOR CORPORATION. As used herein:

1. Life support devices or systems are devices or systems which, (a) are intended for surgical implant into the body, or (b) support or sustain life, and (c) whose failure to perform when properly used in accordance with instructions for use provided in the labeling, can be reasonably expected to result in a significant injury to the user.
2. A critical component in any component of a life support device or system whose failure to perform can be reasonably expected to cause the failure of the life support device or system, or to affect its safety or effectiveness.

www.fairchildsemi.com

ON Semiconductor and  are trademarks of Semiconductor Components Industries, LLC dba ON Semiconductor or its subsidiaries in the United States and/or other countries. ON Semiconductor owns the rights to a number of patents, trademarks, copyrights, trade secrets, and other intellectual property. A listing of ON Semiconductor's product/patent coverage may be accessed at www.onsemi.com/site/pdf/Patent-Marking.pdf. ON Semiconductor reserves the right to make changes without further notice to any products herein. ON Semiconductor makes no warranty, representation or guarantee regarding the suitability of its products for any particular purpose, nor does ON Semiconductor assume any liability arising out of the application or use of any product or circuit, and specifically disclaims any and all liability, including without limitation special, consequential or incidental damages. Buyer is responsible for its products and applications using ON Semiconductor products, including compliance with all laws, regulations and safety requirements or standards, regardless of any support or applications information provided by ON Semiconductor. "Typical" parameters which may be provided in ON Semiconductor data sheets and/or specifications can and do vary in different applications and actual performance may vary over time. All operating parameters, including "Typicals" must be validated for each customer application by customer's technical experts. ON Semiconductor does not convey any license under its patent rights nor the rights of others. ON Semiconductor products are not designed, intended, or authorized for use as a critical component in life support systems or any FDA Class 3 medical devices or medical devices with a same or similar classification in a foreign jurisdiction or any devices intended for implantation in the human body. Should Buyer purchase or use ON Semiconductor products for any such unintended or unauthorized application, Buyer shall indemnify and hold ON Semiconductor and its officers, employees, subsidiaries, affiliates, and distributors harmless against all claims, costs, damages, and expenses, and reasonable attorney fees arising out of, directly or indirectly, any claim of personal injury or death associated with such unintended or unauthorized use, even if such claim alleges that ON Semiconductor was negligent regarding the design or manufacture of the part. ON Semiconductor is an Equal Opportunity/Affirmative Action Employer. This literature is subject to all applicable copyright laws and is not for resale in any manner.

PUBLICATION ORDERING INFORMATION

LITERATURE FULFILLMENT:

Literature Distribution Center for ON Semiconductor
19521 E. 32nd Pkwy, Aurora, Colorado 80011 USA
Phone: 303-675-2175 or 800-344-3860 Toll Free USA/Canada
Fax: 303-675-2176 or 800-344-3867 Toll Free USA/Canada
Email: orderlit@onsemi.com

N. American Technical Support: 800-282-9855 Toll Free
USA/Canada
Europe, Middle East and Africa Technical Support:
Phone: 421 33 790 2910
Japan Customer Focus Center
Phone: 81-3-5817-1050

ON Semiconductor Website: www.onsemi.com
Order Literature: <http://www.onsemi.com/orderlit>

For additional information, please contact your local
Sales Representative